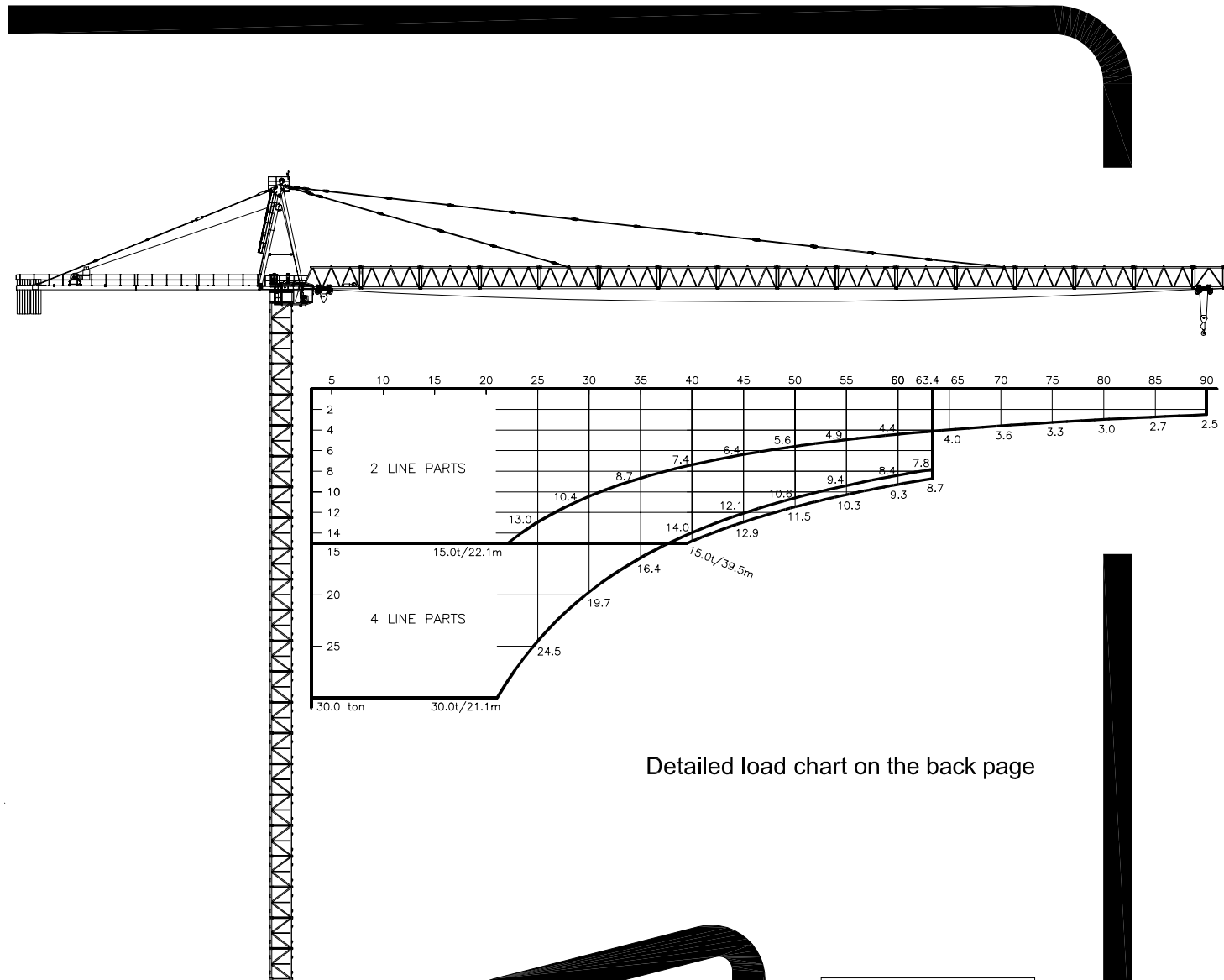
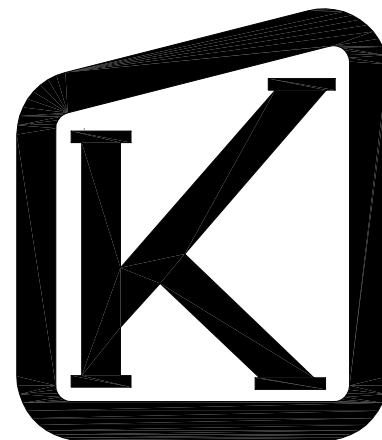


TECHNICAL DATA

K-560



Detailed load chart on the back page



Serial numbers:
.... - 1473

KRØLL CRANES A/S

Nordkranvej 2 · DK-3540 Lyngge · Denmark · Phone: +45 48 187400 · Fax: +45 48 188807

E-mail: krollcranes@krollcranes.dk · www.krollcranes.com

HOIST WINCH / HUBWERK	90 kW
POWER SUPPLY	3x400V 50 Hz
POWER CONSUMPTION / STROMVERBRAUCH	150 kVA
FUSE / SICHERUNG	225 Amps
POWER CABLE / HAUPTKABEL	0-100 m
	4G95

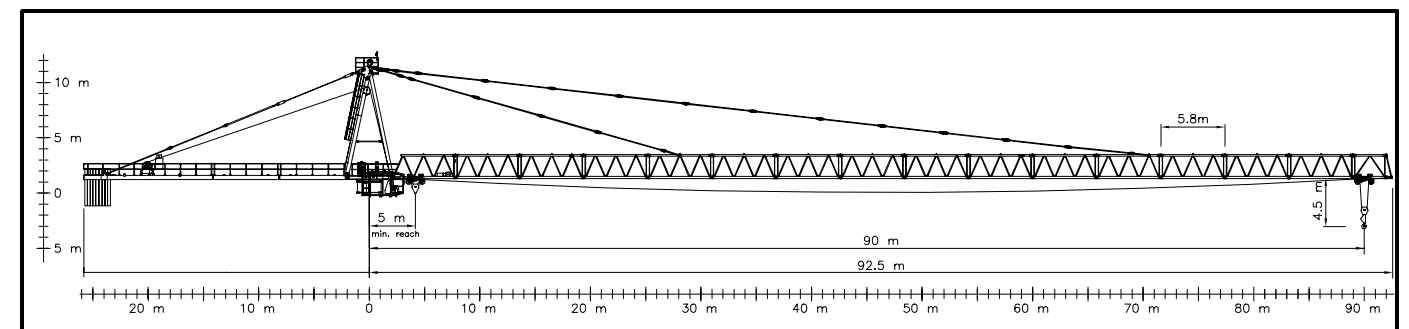
HOIST SPEEDS / GESCHWINDIGKEITEN	
30 t maximum load	

Slewing	3 x 5 kW	JIB LENGTH	0 - 0.6 rpm
	4 x 5 kW	-69 m	0 - 0.5 rpm
Trolleying	18.5 kW	0-30 t	0 - 70 m/min
		30-45 t	0 - 50 m/min
Travelling	4 kW units Amount depends on erection height	0-45 t	25 m/min

HOIST WIRE	ø22 mm	FILL FACTOR 0.65	1770 MPa	BREAKING STRESS
HUB-SEIL	90 kW HOIST WINCH			BRUCHSPANNUNG
	500 m			
	> 500 m *			
TROLLEY ROPE	ø15 mm	FILL FACTOR 0.65	1770 MPa	BREAKING STRESS
LAUFKATZE-SEIL				BRUCHSPANNUNG

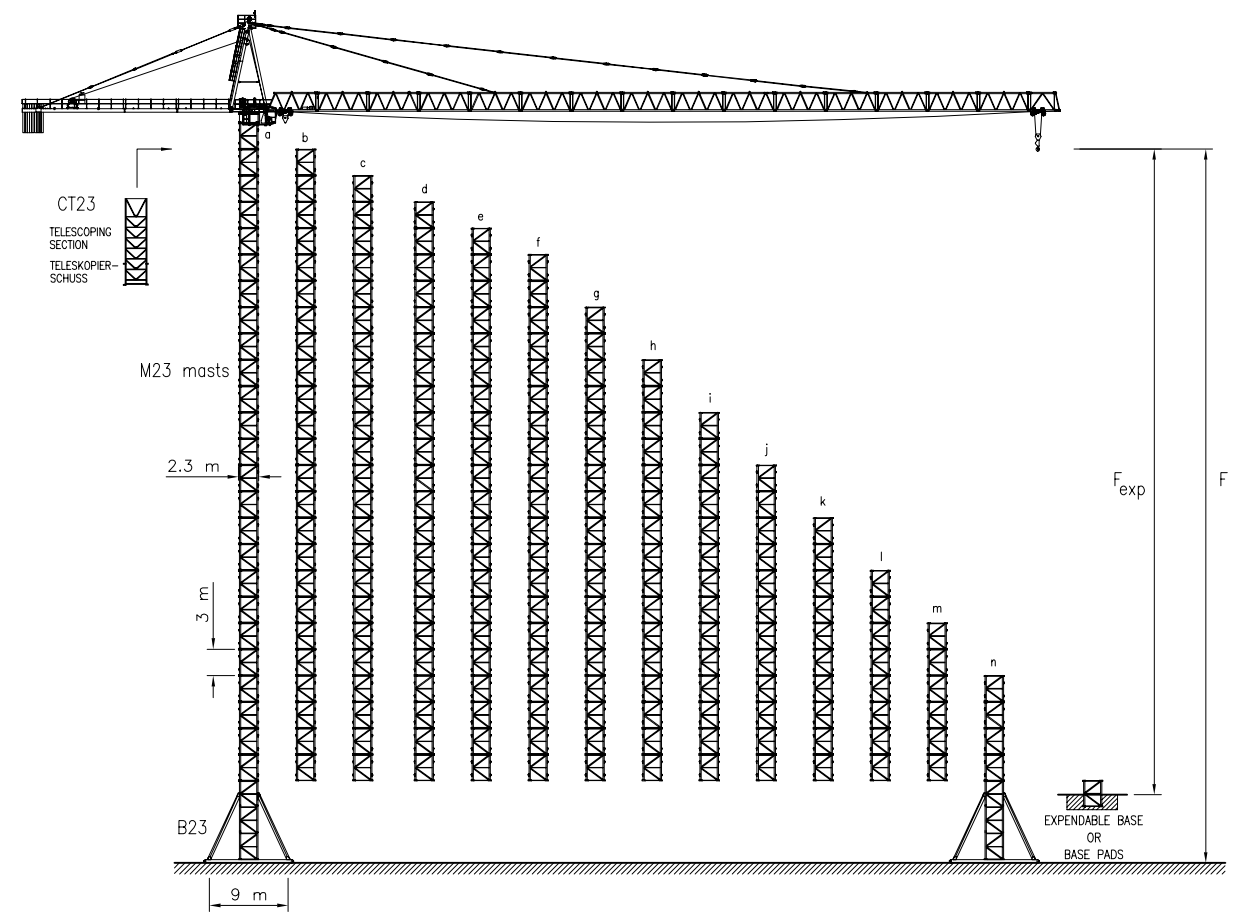
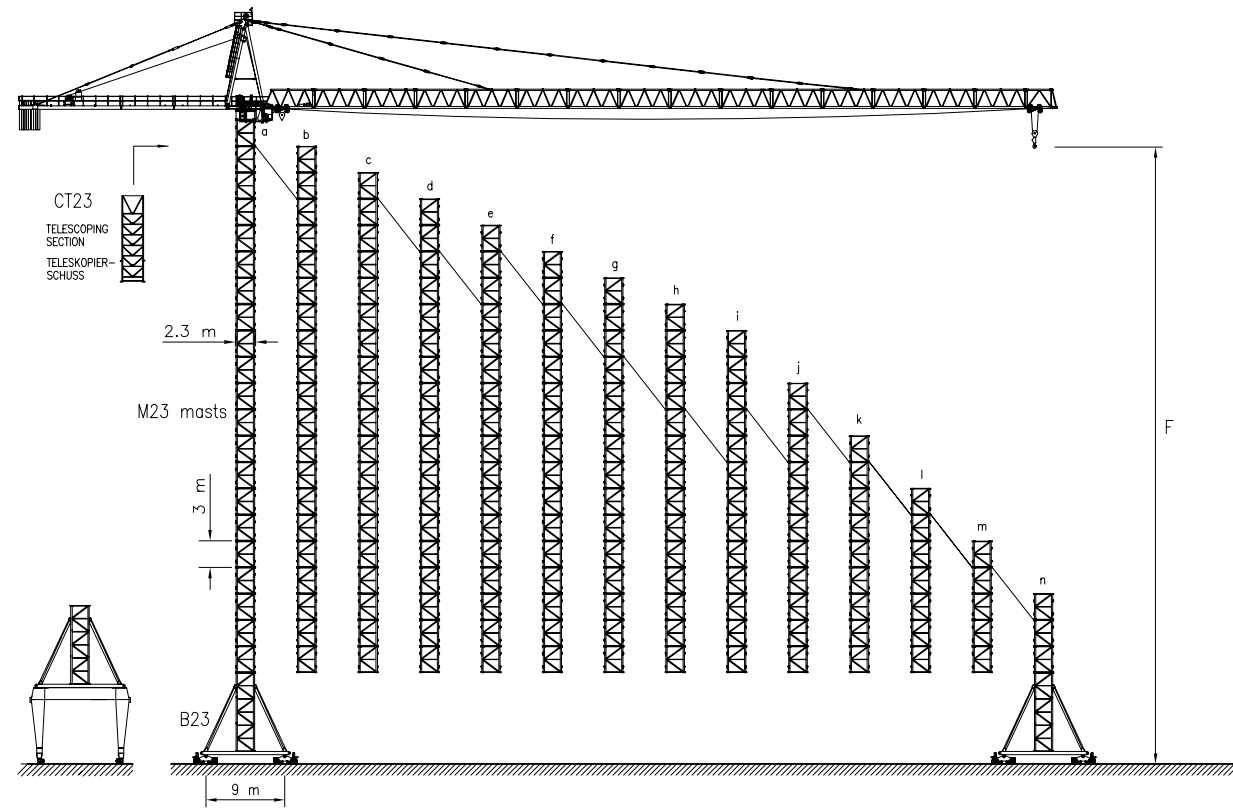
* CONSULT KRØLL CRANES A/S - NEHMEN SIE MIT KRØLL CRANES A/S KONTAKT AUF

JIB LENGTH	MAXIMUM LOAD	LOAD CAPACITIES [m x t]																				
		15	17	20	25	30	35	40	45	50	51.8	55	60	63.4	65	69.2	70	75	80	85	90	
90.0 m	1 trolley	15t at 22.1m	15.0	15.0	15.0	13.0	10.4	8.7	7.4	6.4	5.6	5.3	4.9	4.4	4.1	4.0	3.7	3.6	3.3	3.0	2.7	2.5
	2 trolleys	30t at 12.4m	23.5	20.0	16.4	12.3	9.7	7.9	6.6	5.6	4.8	4.5	4.1	3.5	3.2	3.1	2.8	2.7	2.4	2.1	1.8	1.6
80.0 m	1 trolley	15t at 30.4m	15.0	15.0	15.0	15.0	15.0	12.8	10.9	9.5	8.4	8.0	7.5	6.7	6.3	6.1	5.7	5.6	5.1	4.7		
	2 trolleys	30t at 16.5m	30.0	29.0	23.8	18.2	14.5	12.0	10.1	8.7	7.6	7.2	6.6	5.9	5.4	5.2	4.8	4.7	4.2	3.8		
69.2 m	1 trolley	15t at 36.8m	15.0	15.0	15.0	15.0	15.0	15.0	13.7	11.9	10.6	10.1	9.5	8.5	8.0	7.8	7.2					
	2 trolleys	30t at 19.7m	30.0	30.0	29.5	22.6	18.2	15.1	12.8	11.1	9.7	9.3	8.6	7.7	7.1	6.9	6.3					
63.4 m	1 trolley	15t at 39.5m	15.0	15.0	15.0	15.0	15.0	15.0	14.8	12.9	11.5	11.0	10.3	9.3	8.7							
	2 trolleys	30t at 21.1m	30.0	30.0	30.0	24.5	19.7	16.4	14.0	12.1	10.6	10.1	9.4	8.4	7.8							
51.8 m	1 trolley	15t at 39.5m	15.0	15.0	15.0	15.0	15.0	15.0	14.8	12.9	11.5	11.0										
	2 trolleys	30t at 21.1m	30.0	30.0	30.0	24.5	19.7	16.4	14.0	12.1	10.6	10.1										
	option (15/45t)	45t at 14.3m	42.5	36.3	29.7	22.5	17.8	14.6	12.2	10.4	9.0	8.5										



L		kg	POS		ITEM	kg	POS		ITEM	kg
90		22000	1	FRONT STAYS	3600	9	CABIN K5	2000		
			2	REAR STAYS	1500	10	M23-120	2300		
			3	TOP TOWER	4000	11	M23-150	3000		
			4	OUTER SECTION	3500	12	B23-120	8500		
			5	MIDDLE SECTION	1700	13	B23-150	10000		
			6	INNER SECTION	1700	14	N23-120	1500		
			7	SLEWING	7000	15	N23-150	2300		
			8	MAST HEAD	4500	16				

CONVERSION OF THE UNITS FOR FORCES	10 N = 1 kg	SUBJECT TO ALTERATIONS	F.E.M	DATA SHEET	K-560
UMRECHNUNG DER EINHEITEN FÜR KRÄFTE	10 kN = 1 ton	ÄNDERUNGEN VORBEHALTEN		DATENBLATT	010401



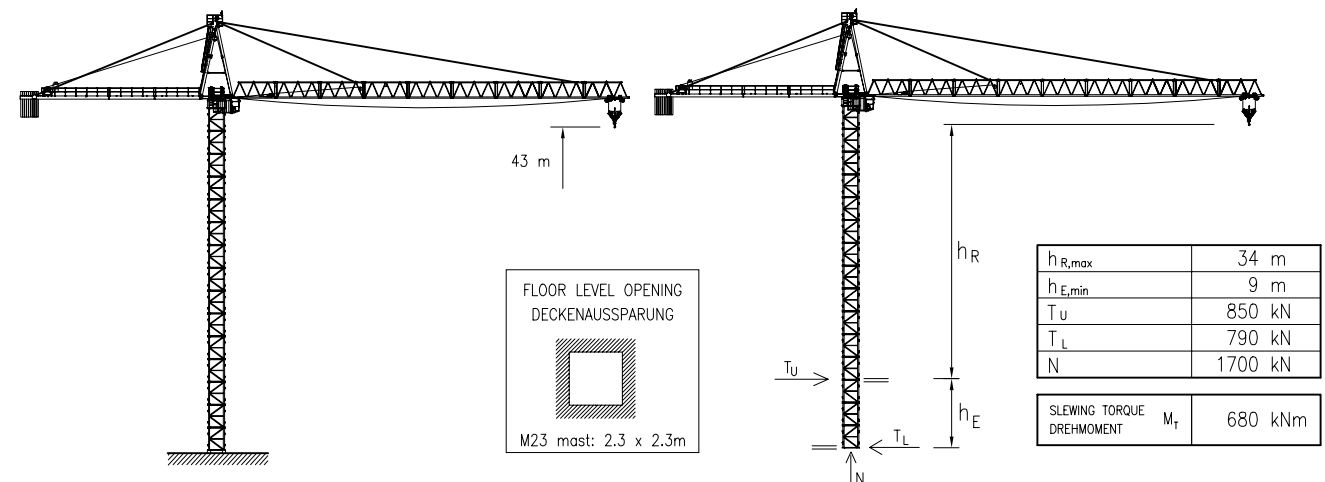
Based on maximum load capacity (63.4 m jib)

HOOK HEIGHT / HAKENHÖHE	F	m	71	68	65	62	59	56	53	50	47	41	35	29	23	17
RAIL GAUGE SPURWEITE		m	9													
BALLAST	tons		95	88	81	74	68	64	60	60	60	60	60	60	60	60
PARKING FOUNDATIONS PARKIERUNGSFUNDAMENTE x4	tons		0	0	0	0	0	0	0	0	0	0	0	0	0	0
CORNER PRESSURE ECKDRUCK	IN SERVICE IM BETRIEB	kN	1850	1780	1700	1640	1570	1520	1460	1410	1360	1270	1190	1100	1050	990
	OUT OF SERVICE AUSSER BETRIEB	kN	1110	1030	960	890	830	770	710	680	670	660	650	630	620	600

Based on maximum load capacity (63.4 m jib)

HOOK HEIGHT / HAKENHÖHE	F	m	82	79	76	73	70	67	61	55	49	43	37	31	25	19
BALLAST	tons		85	77	70	64	59	53	50	50	50	50	50	50	50	54
CORNER PRESSURE ECKDRUCK	IN SERVICE IM BETRIEB	kN	1860	1790	1720	1650	1590	1530	1430	1330	1250	1180	1120	1060	1010	970
	OUT OF SERVICE AUSSER BETRIEB	kN	1380	1250	1150	1080	1010	940	810	690	640	620	610	600	600	590
B x B x H	F	m	82	79	76	73	70	67	61	55	49	43	37	31	25	19
H=1.0m	B	m	9.6	9.6	9.6	9.6	9.6	9.6	9.6	9.6	9.6	9.6	9.6	9.6	9.6	9.6
FOUNDATION WEIGHT FUNDAMENTSGEWICHT	tons		221	221	221	221	221	221	221	221	221	221	221	221	221	221
B x B x H	F_EXP	m	73	70	67	64	61	58	52	46	40	34	28	22	16	
H=1.8m	B	m	9.0	8.9	8.8	8.7	8.6	8.5	8.3	8.2	8.0	7.9	7.8	7.7	7.6	
FOUNDATION WEIGHT FUNDAMENTSGEWICHT	tons		350	342	335	327	320	312	298	290	276	270	263	256	250	

K-560 CLIMBER / KLETTERKRAN



EXTRA EQUIPMENT AVAILABLE

WALL TIE FRAMES, CABLE DRUMS, CURVE RUNNING AND 90° TURN BOGIES, ELEVATOR, FLOOD LIGHTING

ZUSÄTZLICHE AUSRÜSTUNG VERFÜGBAR

EINSPANNRAHMEN, KABELTROMMEL, KURVENFAHRENDE UND 90° DREHSCHEMEL, AUFZUG, SCHEINWERFER

THE DESIGN AND TECHNICAL SPECIFICATIONS GIVEN ARE APPLICABLE TO THE STANDARD MACHINE OF CRANE K-560. MODIFICATIONS ACCORDING TO SPECIAL REQUIREMENTS REGARDING FOR EXAMPLE HOOK HEIGHT, JIB LENGTH, RAIL GAUGE, ETC.. ARE AVAILABLE. PLEASE CONTACT KRÖLL CRANES A/S.

DIE KONSTRUKTIONS- UND TECHNISCHEN DATEN BEZIEHEN SICH AUF DIE STANDARD AUSFÜHRUNG DES KRANTYPS K-560. INDIVIDUELLE FORDERUNGEN Z.B AN HAKENHÖHE, AUSLEGERLÄNGE, SPURWEITE USW. KÖNNEN BERÜCKSICHTIGT WERDEN. NEHMEN SIE MIT KRÖLL CRANES A/S KONTAKT AUF.