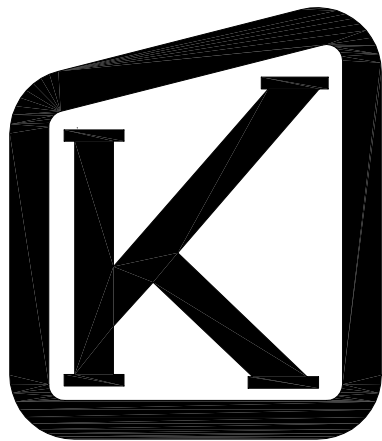
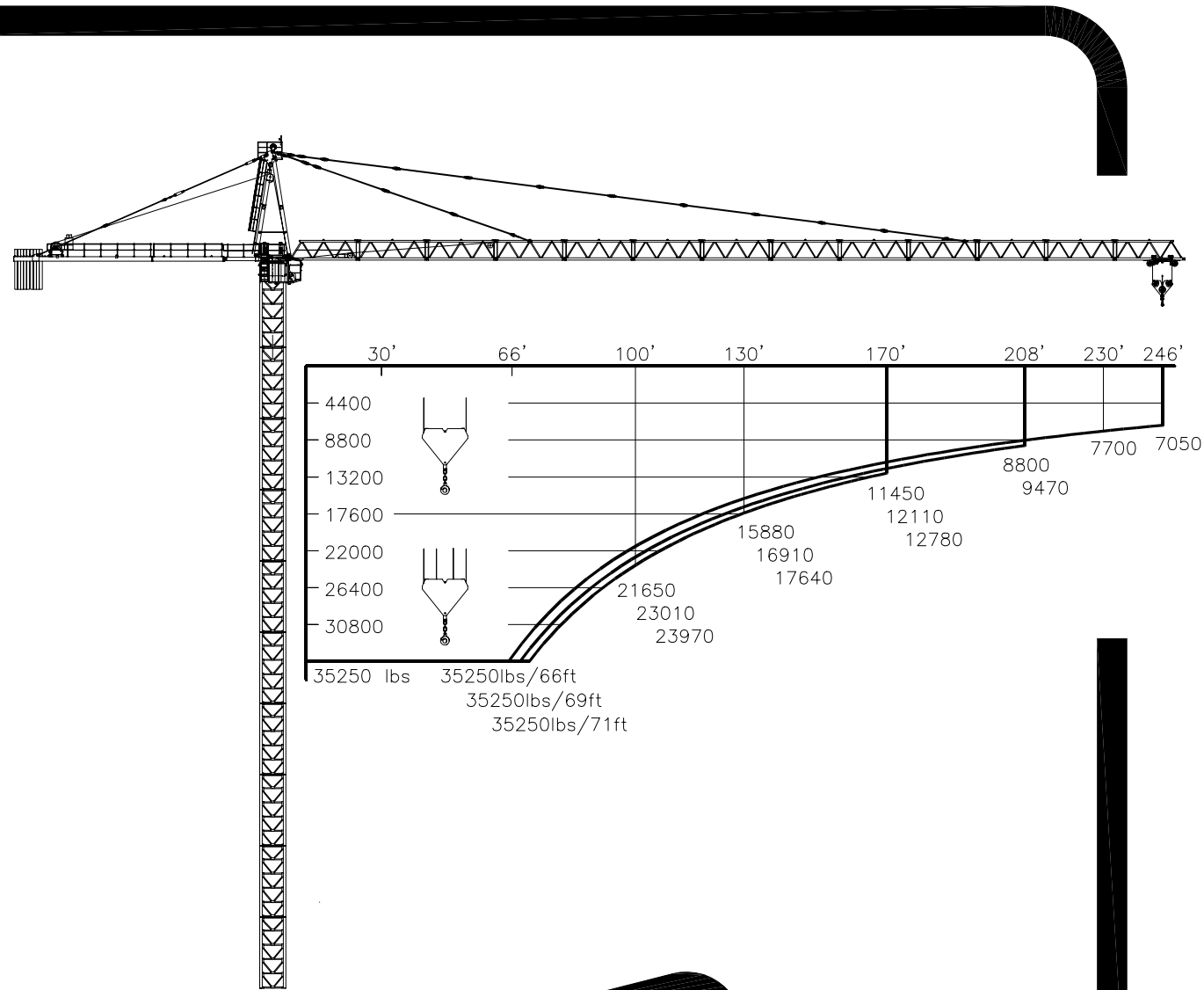


# TECHNICAL DATA

# K-320



|   |           |                                   |
|---|-----------|-----------------------------------|
| ⚡ | 3 x 480 V | CONTROL VOLTAGE / STEUER SPANNUNG |
|   | 60 Hz     | 24 VDC - 220 VAC                  |

|  |          |                      |             |
|--|----------|----------------------|-------------|
|  | 2 x 5 kW | MAX JIB MAX AUSLEGER | 0 - 0.6 RPM |
|--|----------|----------------------|-------------|

|  |                                  |             |                |
|--|----------------------------------|-------------|----------------|
|  | HOIST WINCH / HUBWERK            | 66 kW       | 108 kW         |
|  | POWER CONSUMPTION/STROMVERBRAUCH | 115 kVA     | 174 kVA        |
|  | FUSE / SICHERUNG                 | 125 Amps    | 200 Amps       |
|  | POWER CABLE                      | 4 x 1/0 AWG | 4 x 3/0 AWG    |
|  | HAUPTKABEL                       | 4 x 2/0 AWG | 4 x 3/0 AWG    |
|  |                                  | 4 x 3/0 AWG | 4 x 250MCM AWG |

|  |       |             |                |
|--|-------|-------------|----------------|
|  | 11 kW | 0-35250 lbs | 0 - 230 ft/min |
|--|-------|-------------|----------------|

|  |   |                  |           |
|--|---|------------------|-----------|
|  | 4 kW units<br>Amount depends on erection height | F <sub>max</sub> | 82 ft/min |
|--|---|------------------|-----------|

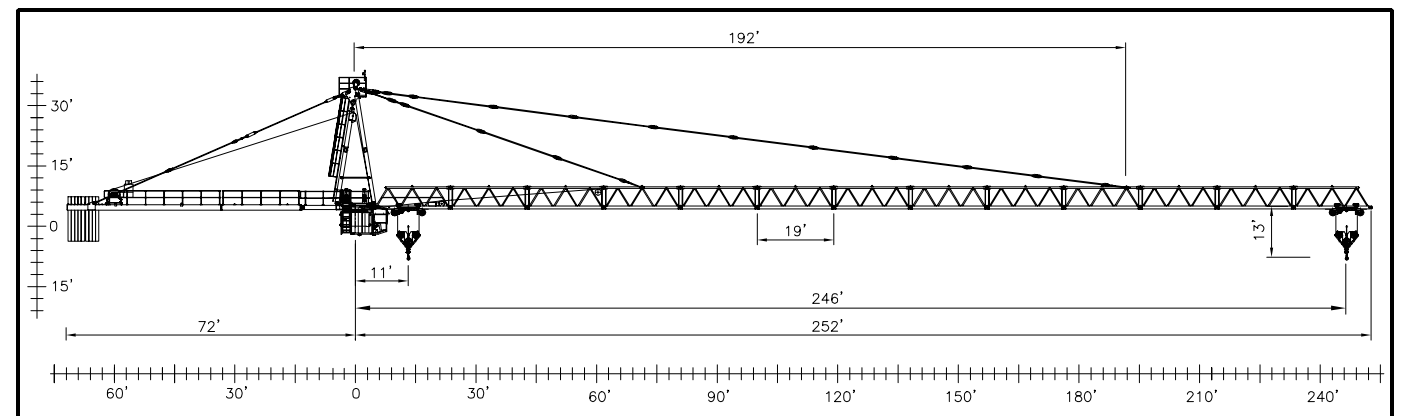
|  |                  |                |                |
|--|------------------|----------------|----------------|
|  | 0 - 5500 lbs     | 0 - 360 ft/min | 0 - 600 ft/min |
|  | 5500 - 9700 lbs  | 0 - 240 ft/min | 0 - 400 ft/min |
|  | 9700 - 17625 lbs | 0 - 140 ft/min | 0 - 230 ft/min |

|            |                       |                  |          |                 |
|------------|-----------------------|------------------|----------|-----------------|
| HOIST WIRE | ø18 mm                | FILL FACTOR 0.65 | 1770 MPa | BREAKING STRESS |
| HUB-SEIL   | 66/108 kW HOIST WINCH |                  |          | BRUCHSPANNUNG   |
|            | 1970 ft               |                  |          |                 |
|            | >1970 ft *            |                  |          |                 |

|  |                   |                |                |
|--|-------------------|----------------|----------------|
|  | 0 - 11000 lbs     | 0 - 180 ft/min | 0 - 300 ft/min |
|  | 11000 - 19400 lbs | 0 - 120 ft/min | 0 - 200 ft/min |
|  | 19400 - 35250 lbs | 0 - 70 ft/min  | 0 - 115 ft/min |

|                |       |                  |          |                 |
|----------------|-------|------------------|----------|-----------------|
| TROLLEY ROPE   | ø9 mm | FILL FACTOR 0.65 | 1770 MPa | BREAKING STRESS |
| LAUFKATZE-SEIL |       |                  |          | BRUCHSPANNUNG   |

\* CONSULT KRØLL CRANES A/S - NEHMEN SIE MIT KRØLL CRANES A/S KONTAKT AUF



APPROX. ERECTION WEIGHTS  
UNGEFÄHRE MONTAGEGEWICHTE

| L (ft) | lbs   | POS | ITEM        | lbs   | POS | ITEM      | lbs   |
|--------|-------|-----|-------------|-------|-----|-----------|-------|
| 246    | 37470 | 1   | OUTER STAY  | 5285  | 9   | CABIN     | 4405  |
| 226    | 35700 | 2   | INNER STAY  | 2095  | 10  | M22-2     | 8835  |
| 207    | 33940 | 3   | TOP TOWER   | 7410  | 11  | B22-2, 6m | 23130 |
| 187    | 31280 | 4   | REAR STAY   | 2755  | 12  | N22-2     | 2975  |
| 167    | 29520 | 5   | HOIST WINCH | 5065  | 13  | CT22      | 19825 |
| 151    | 25330 | 6   | REAR JIB    | 12720 |     |           |       |
| 131    | 23570 | 7   | SLEWING     | 13215 |     |           |       |
| 112    | 20990 | 8   | MAST HEAD   | 5505  |     |           |       |

**EXTRA EQUIPMENT AVAILABLE**  
WALL TIE FRAMES, CABLE DRUMS, CURVE RUNNING AND 90° TURN BOGIES, ELEVATOR, FLOOD LIGHTING

**ZUSÄTZLICHE AUSRÜSTUNG VERFÜGBAR**  
EINSpanNRAHMEN, KABELTROMMEL, KURVENFAHRENDE UND 90° DREHSCHEMEL, AUFZUG, SCHEINWERFER

THE DESIGN AND TECHNICAL SPECIFICATIONS GIVEN ARE APPLICABLE TO THE STANDARD MACHINE OF CRANE K-320. MODIFICATIONS ACCORDING TO SPECIAL REQUIREMENTS REGARDING FOR EXAMPLE HOOK HEIGHT, JIB LENGTH, RAIL GAUGE, ETC.. ARE AVAILABLE. PLEASE CONTACT KRØLL CRANES A/S.

DIE KONSTRUKTIONS- UND TECHNISCHE DATEN BEZIEHEN SICH AUF DIE STANDARD AUSFÜHRUNG DES KRANTYPS K-320. INDIVIDUELLE FORDERUNGEN Z.B AN HAKENHÖHE, AUSLEGERLÄNGE, SPURWEITE USW. KÖNNEN BERÜCKSICHTIGT WERDEN. NEHMEN SIE MIT KRØLL CRANES A/S KONTAKT AUF.

## KRØLL CRANES A/S

Nordkranvej 2 · DK-3540 Lyngby · Denmark · Phone: +45 48 187400 · Fax: +45 48 188807

E-mail: krollcranes@krollcranes.dk · www.krollcranes.com

|   |                   |  |       |                          |                 |
|---|-------------------|--|-------|--------------------------|-----------------|
| CONVERSION OF THE UNITS FOR FORCES<br>UMRECHNUNG DER EINHEITEN FÜR KRÄFTE | 1 kips = 1000 lbs | SUBJECT TO ALTERATIONS<br>ÄNDERUNGEN VORBEHALTEN | F.E.M | DATA SHEET<br>DATENBLATT | K-320<br>010401 |
|---|-------------------|--|-------|--------------------------|-----------------|