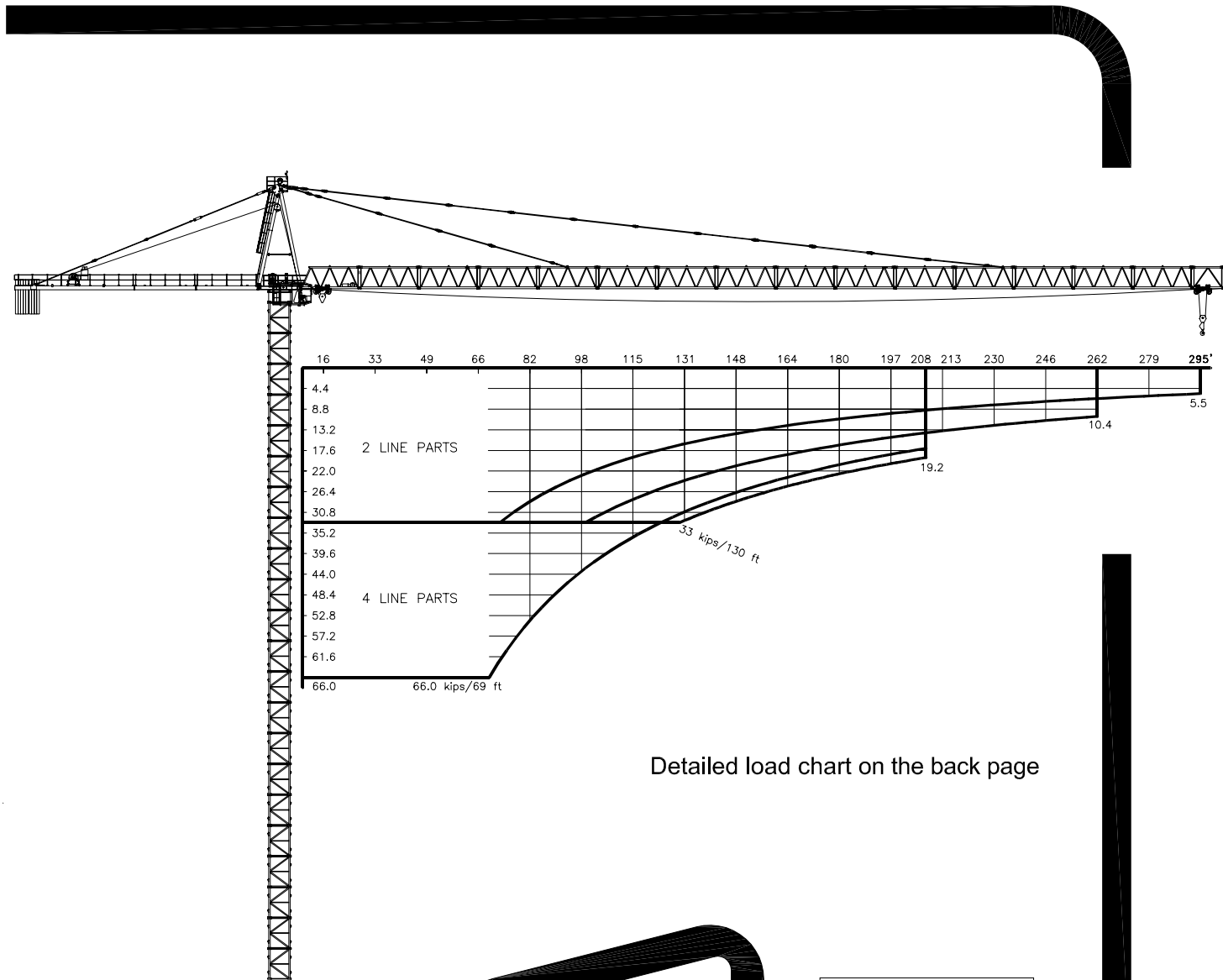
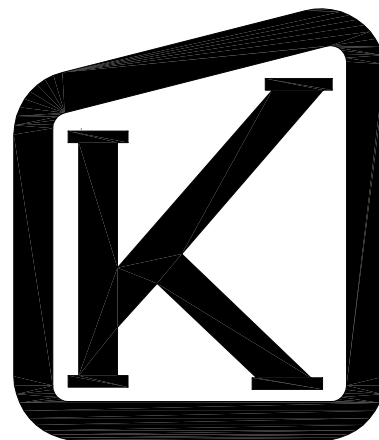


TECHNICAL DATA

K-560



Detailed load chart on the back page



Serial numbers:
.... - 1473

KRØLL CRANES A/S

Nordkranvej 2 · DK-3540 Lyngby · Denmark · Phone: +45 48 187400 · Fax: +45 48 188807

E-mail: krollcranes@krollcranes.dk · www.krollcranes.com

HOIST WINCH / HUBWERK	108 kW
POWER SUPPLY	3x480V 60 Hz
POWER CONSUMPTION / STROMVERBRAUCH	180 kVA
FUSE / SICHERUNG	225 Amps
POWER CABLE / HAUPTKABEL	0-300 ft 4 x 3/0 AWG

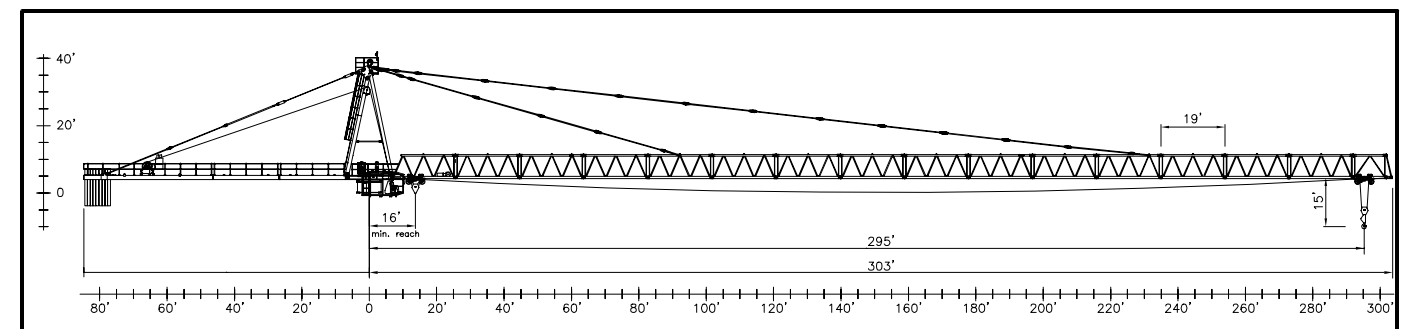
HOIST SPEEDS / GESCHWINDIGKEITEN	
ft/min	lbs
295	66000
230	55000
175	44000
145	33000
120	22000
60	11000
66000 lbs maximum load	

Slewing	3 x 5 kW	JIB LENGTH	0 - 0.6 rpm
	4 x 5 kW	-226 ft	0 - 0.5 rpm
Trolleying	18.5 kW	0-66000 lbs	0 - 230 ft/min
		66000-99000 lbs	0 - 160 ft/min
Travelling	4 kW units Amount depends on erection height	0-99000 lbs	80 ft/min

HOIST WIRE	ø22 mm	FILL FACTOR 0.65	1770 MPa	BREAKING STRESS
HUB-SEIL	108 kW HOIST WINCH			BRUCHSPANNUNG
	1640 ft			
	> 1640 ft *			
TROLLEY ROPE	ø15 mm	FILL FACTOR 0.65	1770 MPa	BREAKING STRESS
LAUFKATZE-SEIL				BRUCHSPANNUNG

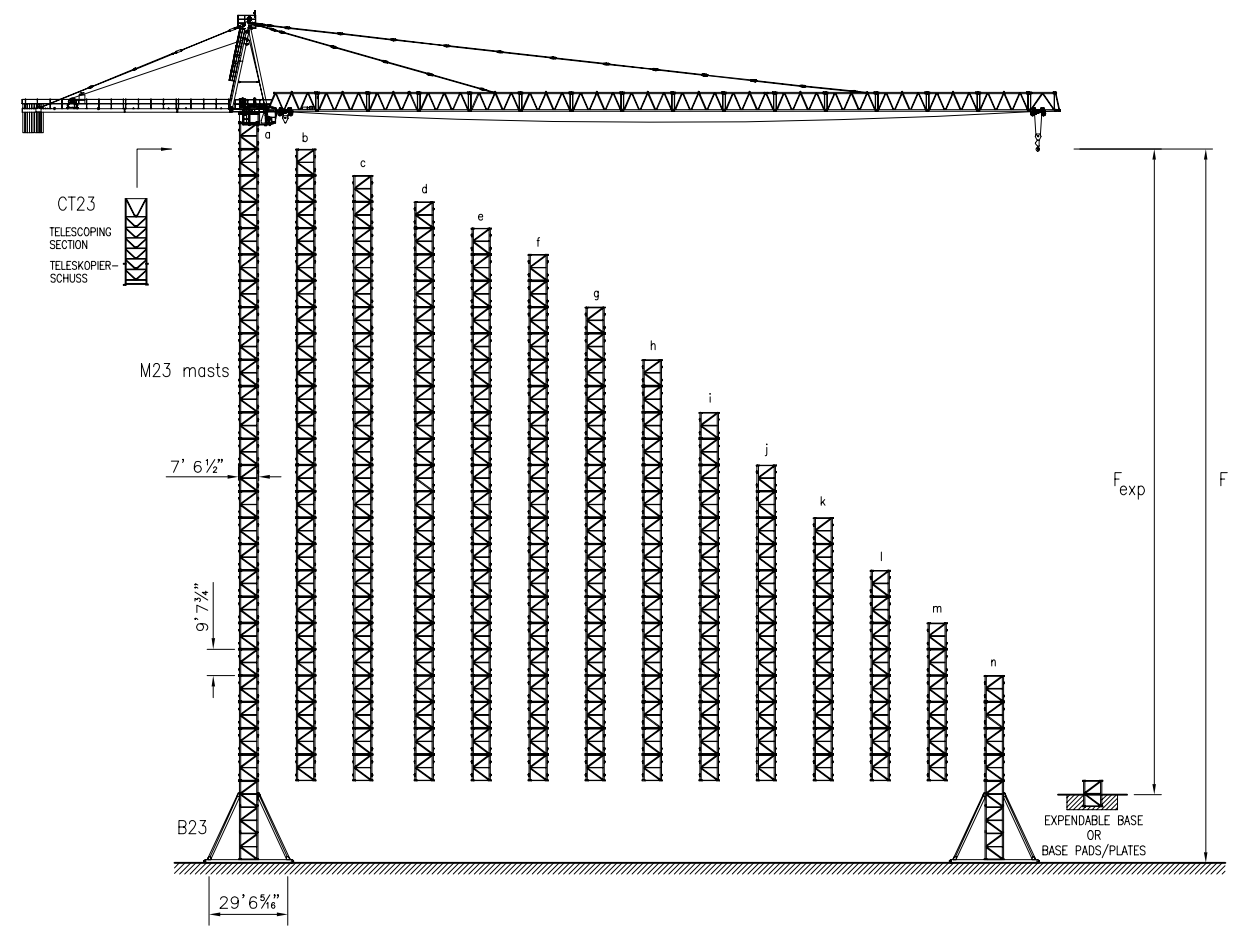
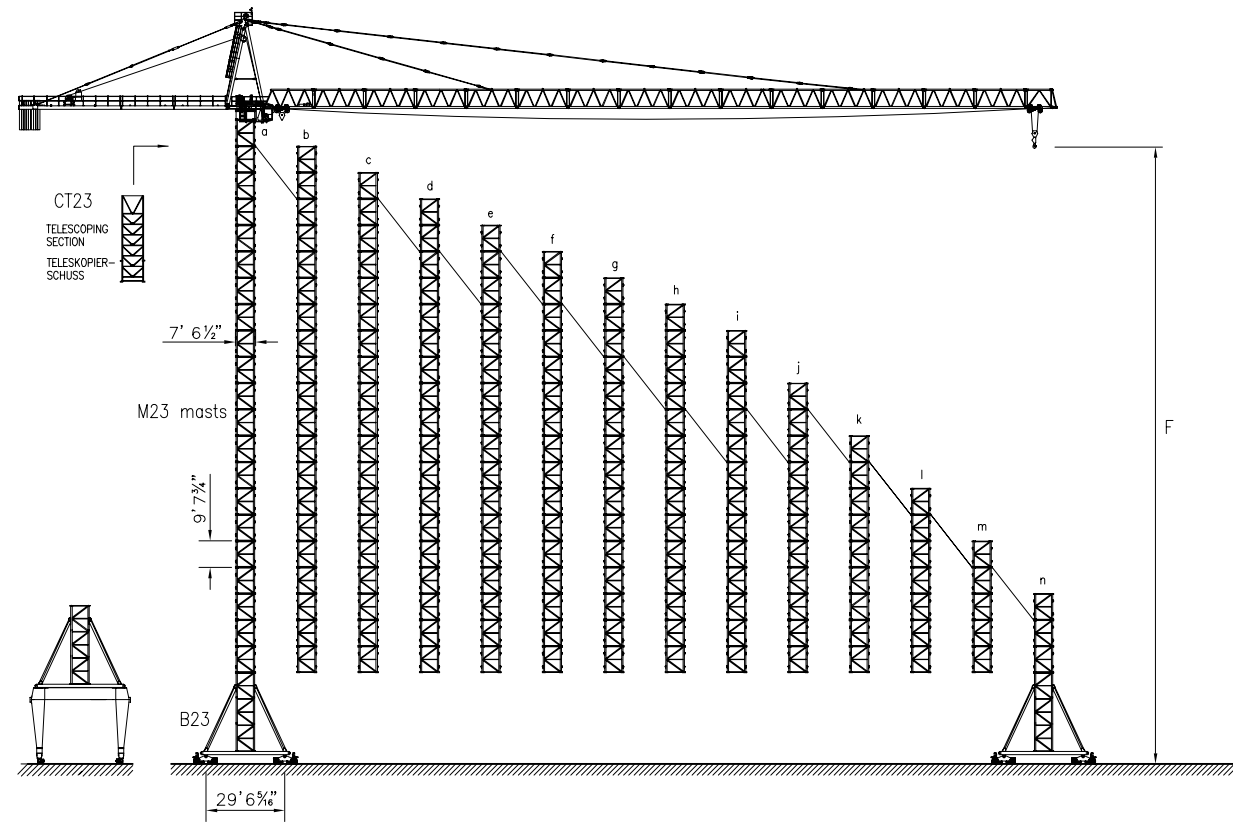
* CONSULT KRØLL CRANES A/S - NEHMEN SIE MIT KRØLL CRANES A/S KONTAKT AUF

JIB LENGTH	MAXIMUM LOAD	LOAD CAPACITIES [ft x kips]																				
		49	58	66	82	98	115	131	147	164	170	180	197	208	213	227	230	246	262	279	295	
295 ft	1 trolley	33 kips at 72 ft	33.0	33.0	33.0	28.6	22.9	19.2	16.3	14.1	12.3	11.7	10.8	9.7	9.0	8.8	8.1	11.8	7.3	6.6	5.9	5.5
	2 trolleys	66 kips at 41 ft	51.7	44.0	36.1	27.1	21.4	17.4	14.5	12.3	10.6	9.9	9.0	7.7	7.0	6.8	6.2	5.9	5.3	4.6	4.0	3.5
262 ft	1 trolley	33 kips at 100 ft	33.0	33.0	33.0	33.0	33.0	28.2	24.0	20.9	18.5	17.6	16.5	14.8	13.9	13.4	12.6	12.3	11.2	10.4		
	2 trolleys	66 kips at 54 ft	66.0	63.9	52.4	40.1	31.9	26.4	22.2	19.2	16.7	15.9	14.5	13.0	11.9	11.5	10.6	10.4	9.3	8.4		
227 ft	1 trolley	33 kips at 121 ft	33.0	33.0	33.0	33.0	33.0	33.0	30.2	26.2	23.3	22.2	20.9	18.7	17.6	17.2	15.9					
	2 trolleys	66 kips at 65 ft	66.0	66.0	65.0	49.8	40.1	33.3	28.2	24.4	21.4	20.5	18.9	17.0	15.6	15.2	13.9					
208 ft	1 trolley	33 kips at 130 ft	33.0	33.0	33.0	33.0	33.0	33.0	32.6	28.4	25.3	24.2	22.7	20.5	19.2							
	2 trolleys	66 kips at 69 ft	66.0	66.0	66.0	54.0	43.4	36.1	30.8	26.7	23.3	22.2	20.7	18.5	17.2							
170 ft	1 trolley	33 kips at 130 ft	33.0	33.0	33.0	33.0	33.0	33.0	32.6	28.4	25.3	24.2										
	2 trolleys	66 kips at 69 ft	66.0	66.0	66.0	54.0	43.4	36.1	30.8	26.7	23.3	22.2										
	option (33/99kips)	99 kips at 47 ft	93.6	80.0	65.4	49.6	39.2	32.2	26.9	22.9	19.8	18.7										



L (ft)		Weight (lbs)	APPROX. ERECTION WEIGHTS				UNGEFÄHRE MONTAGEGEWICHTE				
POS	ITEM	lbs	POS	ITEM	lbs	POS	ITEM	lbs	POS	ITEM	lbs
295	48500		1	FRONT STAYS	7930	9	CABIN K5	4400			
			2	REAR STAYS	3300	10	M23-120	5050			
			3	TOP TOWER	8800	11	M23-150	6600			
			4	OUTER SECTION	7700	12	B23-120	18700			
			5	MIDDLE SECTION	3700	13	B23-150	22000			
			6	INNER SECTION	3700	14	N23-120	3300			
			7	SLEWING	15400	15	N23-150	5000			
			8	MAST HEAD	9900	16					

CONVERSION OF THE UNITS FOR FORCES	1 kips = 1000 lbs	SUBJECT TO ALTERATIONS	F.E.M	DATA SHEET	K-560
UMRECHNUNG DER EINHEITEN FÜR KRÄFTE		ÄNDERUNGEN VORBEHALTEN		DATENBLATT	010401



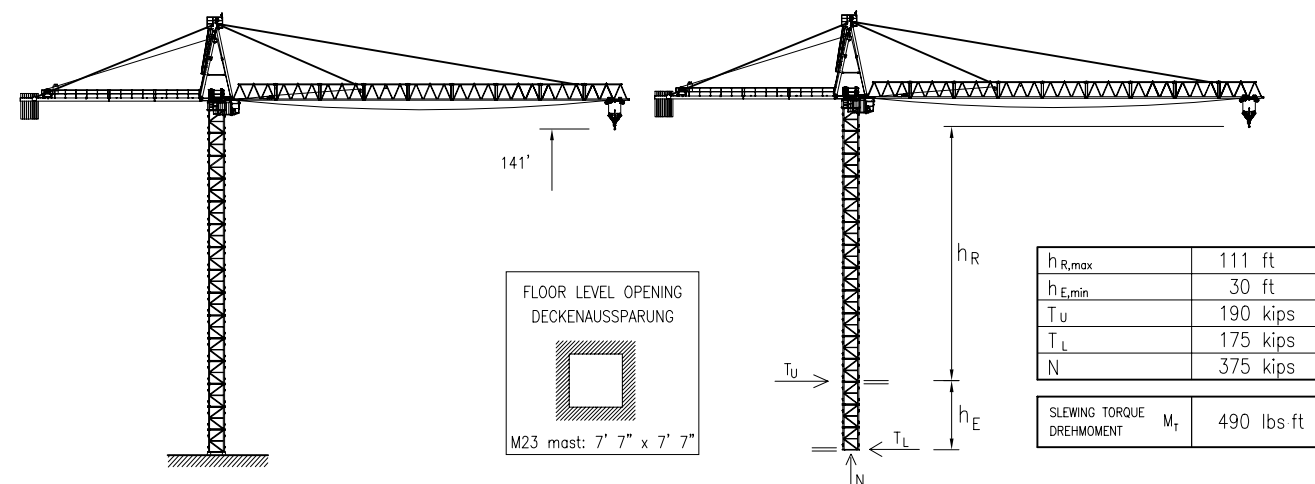
Based on maximum load capacity (208' jib)

HOOK HEIGHT / HAKENHÖHE	F	ft	a	b	c	d	e	f	g	h	i	j	k	l	m	n	
			233	223	213	203	193	184	174	164	154	135	115	95	75	56	
RAIL GAUGE SPURWEITE		ft	29' 6 1/2"														
BALLAST	kips		210	194	180	164	150	142	132	132	132	132	132	132	132	132	132
PARKING FOUNDATIONS PARKIERUNGSFUNDAMENTE x4	kips		0	0	0	0	0	0	0	0	0	0	0	0	0	0	0
CORNER PRESSURE ECKDRUCK																	
IN SERVICE IM BETRIEB	kips		408	392	375	361	346	334	322	311	300	280	262	242	232	218	
OUT OF SERVICE AUSSER BETRIEB	kips		245	227	211	196	183	170	156	150	148	145	144	139	137	132	

Based on maximum load capacity (208' jib)

HOOK HEIGHT / HAKENHÖHE	F	ft	a	b	c	d	e	f	g	h	i	j	k	l	m	n
			269	259	249	239	229	220	200	180	160	141	121	101	82	62
BALLAST	kips		188	170	154	141	130	117	110	110	110	110	110	110	110	120
CORNER PRESSURE ECKDRUCK																
IN SERVICE IM BETRIEB	kips		410	394	380	363	350	337	315	292	275	260	246	233	222	214
OUT OF SERVICE AUSSER BETRIEB	kips		304	275	253	238	222	207	178	152	141	136	134	132	132	130
B x B x H	F	ft	269	259	249	239	229	220	200	180	160	141	121	101	82	62
H=3' 4"	B	ft	32	32	32	32	32	32	32	32	32	32	32	32	32	32
FOUNDATION WEIGHT FUNDAMENTSGEWICHT	kips		486	486	486	486	486	486	486	486	486	486	486	486	486	486
B x B x H	F _{EXP}	ft	239	229	219	210	200	190	170	150	131	111	91	72	52	
H=6'	B	ft	30	30	29	29	29	28	28	27	27	26	26	26	25	
FOUNDATION WEIGHT FUNDAMENTSGEWICHT	kips		771	753	737	720	704	687	656	639	608	594	580	563	550	

K-560 CLIMBER / KLETTERKRAN



EXTRA EQUIPMENT AVAILABLE
 WALL TIE FRAMES, CABLE DRUMS, CURVE RUNNING AND 90° TURN BOGIES, ELEVATOR, FLOOD LIGHTING

ZUSÄTZLICHE AUSRÜSTUNG VERFÜGBAR
 EINSpanNRAHMEN, KABELTROMMEL, KURVENFAHRENDE UND 90° DREHSCHEMEL, AUFZUG, SCHEINWERFER

THE DESIGN AND TECHNICAL SPECIFICATIONS GIVEN ARE APPLICABLE TO THE STANDARD MACHINE OF CRANE K-560. MODIFICATIONS ACCORDING TO SPECIAL REQUIREMENTS REGARDING FOR EXAMPLE HOOK HEIGHT, JIB LENGTH, RAIL GAUGE, ETC.. ARE AVAILABLE. PLEASE CONTACT KRÖLL CRANES A/S.

DIE KONSTRUKTIONS- UND TECHNISCHE DATEN BEZIEHEN SICH AUF DIE STANDARD AUSFÜHRUNG DES KRANTYPS K-560. INDIVIDUELLE FORDERUNGEN Z.B AN HAKENHÖHE, AUSLEGERLÄNGE, SPURWEITE USW. KÖNNEN BERÜCKSICHTIGT WERDEN. NEHMEN SIE MIT KRÖLL CRANES A/S KONTAKT AUF.