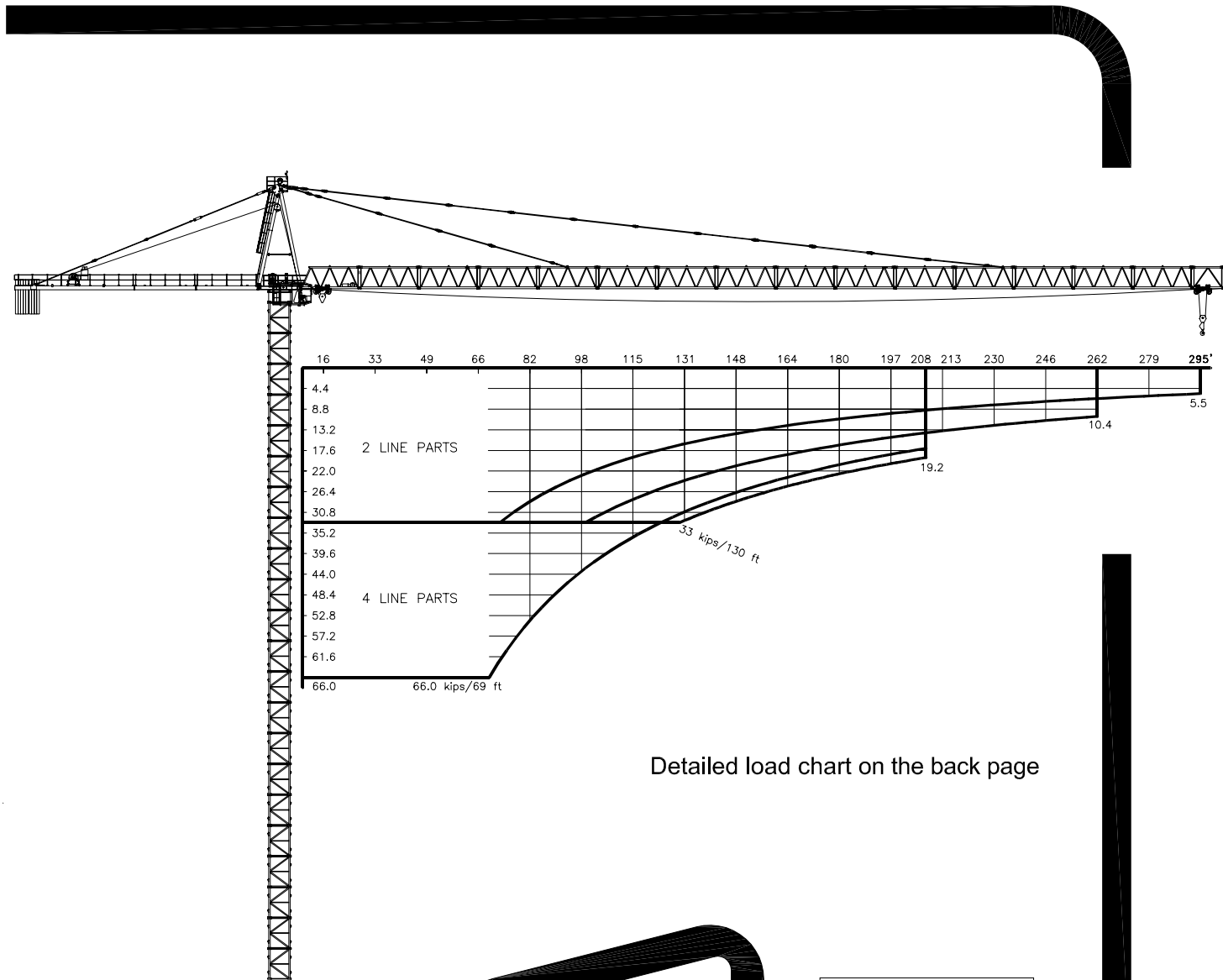
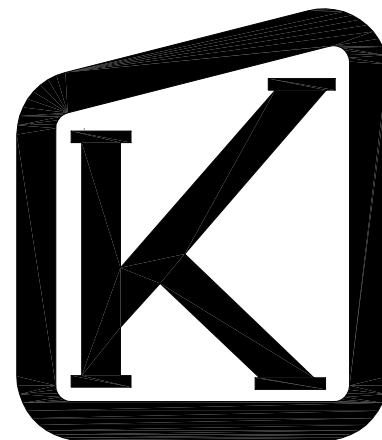


# TECHNICAL DATA

# K-560



Detailed load chart on the back page



Serial numbers:  
.... - 1473

## KRØLL CRANES A/S

Nordkranvej 2 · DK-3540 Lynge · Denmark · Phone: +45 48 187400 · Fax: +45 48 188807

E-mail: krollcranes@krollcranes.dk · www.krollcranes.com

HOIST WINCH / HUBWERK	108 kW
POWER SUPPLY	3x480V 60 Hz
POWER CONSUMPTION / STROMVERBRAUCH	180 kVA
FUSE / SICHERUNG	225 Amps
POWER CABLE / HAUPTKABEL	0-300 ft 4 x 3/0 AWG

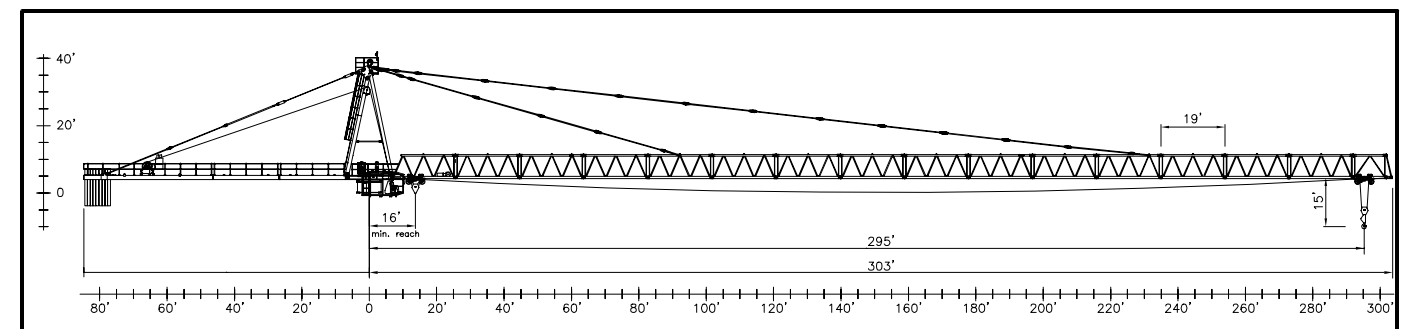
HOIST SPEEDS / GESCHWINDIGKEITEN	
ft/min	lbs
295	66000
230	55000
175	44000
145	33000
120	22000
60	11000
66000 lbs maximum load	

Slewing	3 x 5 kW	JIB LENGTH	0 - 0.6 rpm
	4 x 5 kW	-226 ft	0 - 0.5 rpm
Trolleying	18.5 kW	0-66000 lbs	0 - 230 ft/min
		66000-99000 lbs	0 - 160 ft/min
Travelling	4 kW units Amount depends on erection height	0-99000 lbs	80 ft/min

HOIST WIRE	ø22 mm	FILL FACTOR 0.65	1770 MPa	BREAKING STRESS
HUB-SEIL	108 kW HOIST WINCH			BRUCHSPANNUNG
	1640 ft			
	> 1640 ft *			
TROLLEY ROPE	ø15 mm	FILL FACTOR 0.65	1770 MPa	BREAKING STRESS
LAUFKATZE-SEIL				BRUCHSPANNUNG

\* CONSULT KRØLL CRANES A/S - NEHMEN SIE MIT KRØLL CRANES A/S KONTAKT AUF

JIB LENGTH	MAXIMUM LOAD	LOAD CAPACITIES [ft x kips]																				
		49	58	66	82	98	115	131	147	164	170	180	197	208	213	227	230	246	262	279	295	
295 ft	1 trolley	33 kips at 72 ft	33.0	33.0	33.0	28.6	22.9	19.2	16.3	14.1	12.3	11.7	10.8	9.7	9.0	8.8	8.1	11.8	7.3	6.6	5.9	5.5
	2 trolleys	66 kips at 41 ft	51.7	44.0	36.1	27.1	21.4	17.4	14.5	12.3	10.6	9.9	9.0	7.7	7.0	6.8	6.2	5.9	5.3	4.6	4.0	3.5
262 ft	1 trolley	33 kips at 100 ft	33.0	33.0	33.0	33.0	33.0	28.2	24.0	20.9	18.5	17.6	16.5	14.8	13.9	13.4	12.6	12.3	11.2	10.4		
	2 trolleys	66 kips at 54 ft	66.0	63.9	52.4	40.1	31.9	26.4	22.2	19.2	16.7	15.9	14.5	13.0	11.9	11.5	10.6	10.4	9.3	8.4		
227 ft	1 trolley	33 kips at 121 ft	33.0	33.0	33.0	33.0	33.0	33.0	30.2	26.2	23.3	22.2	20.9	18.7	17.6	17.2	15.9					
	2 trolleys	66 kips at 65 ft	66.0	66.0	65.0	49.8	40.1	33.3	28.2	24.4	21.4	20.5	18.9	17.0	15.6	15.2	13.9					
208 ft	1 trolley	33 kips at 130 ft	33.0	33.0	33.0	33.0	33.0	33.0	32.6	28.4	25.3	24.2	22.7	20.5	19.2							
	2 trolleys	66 kips at 69 ft	66.0	66.0	66.0	54.0	43.4	36.1	30.8	26.7	23.3	22.2	20.7	18.5	17.2							
170 ft	1 trolley	33 kips at 130 ft	33.0	33.0	33.0	33.0	33.0	33.0	32.6	28.4	25.3	24.2										
	2 trolleys	66 kips at 69 ft	66.0	66.0	66.0	54.0	43.4	36.1	30.8	26.7	23.3	22.2										
	option (33/99kips)	99 kips at 47 ft	93.6	80.0	65.4	49.6	39.2	32.2	26.9	22.9	19.8	18.7										



APPROX. ERECTION WEIGHTS		UNGEFÄHRE MONTAGEGEWICHTE					
L (ft)	Weight (lbs)	POS	ITEM	lbs	POS	ITEM	lbs
295	48500	1	FRONT STAYS	7930	9	CABIN K5	4400
		2	REAR STAYS	3300	10	M23-120	5050
		3	TOP TOWER	8800	11	M23-150	6600
		4	OUTER SECTION	7700	12	B23-120	18700
		5	MIDDLE SECTION	3700	13	B23-150	22000
		6	INNER SECTION	3700	14	N23-120	3300
		7	SLEWING	15400	15	N23-150	5000
		8	MAST HEAD	9900	16		

CONVERSION OF THE UNITS FOR FORCES	1 kips = 1000 lbs	SUBJECT TO ALTERATIONS	F.E.M	DATA SHEET	K-560
UMRECHNUNG DER EINHEITEN FÜR KRÄFTE		ÄNDERUNGEN VORBEHALTEN		DATENBLATT	010401