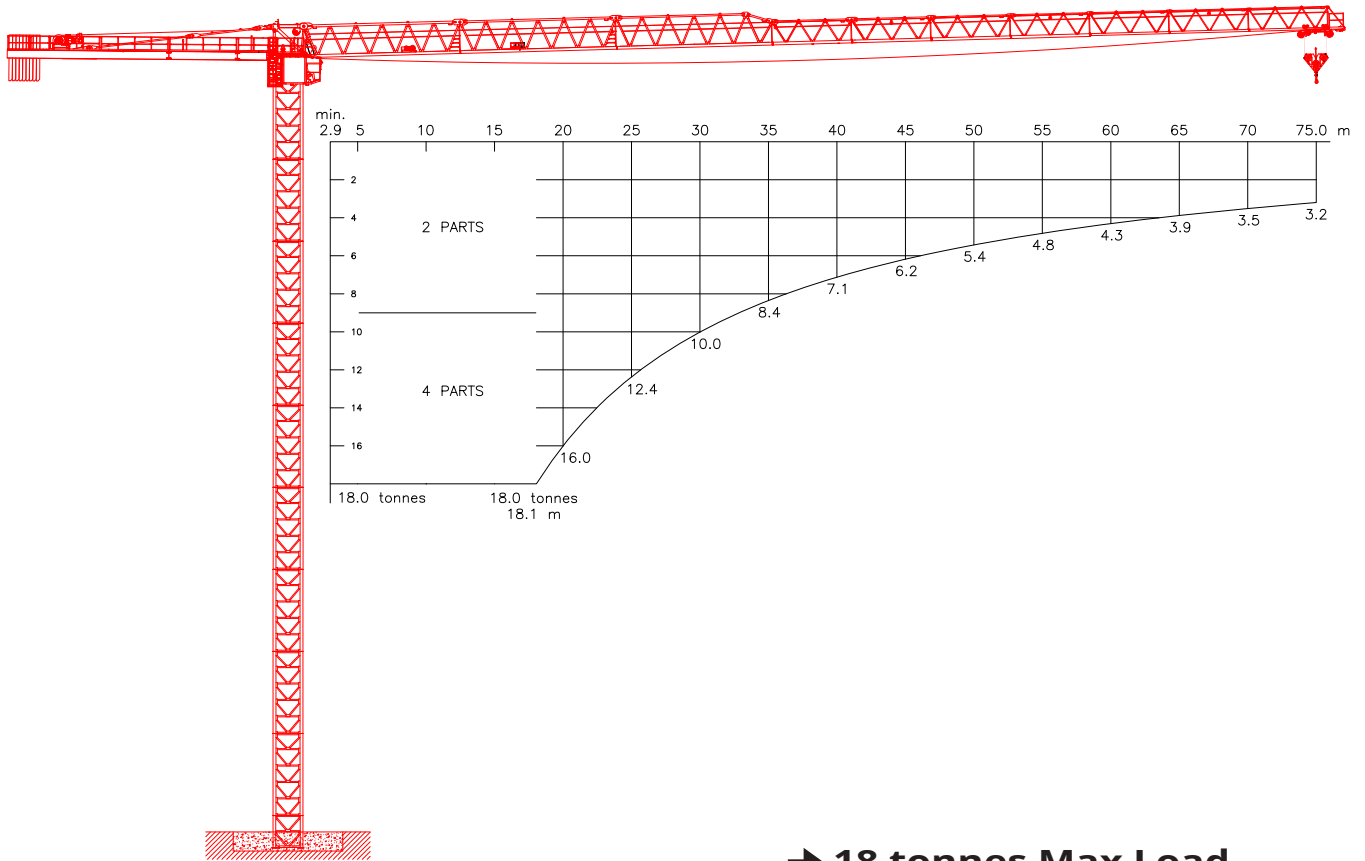




KROLL CRANES



→ 18 tonnes Max Load

F.E.M 1.001-HC1/A3/E3

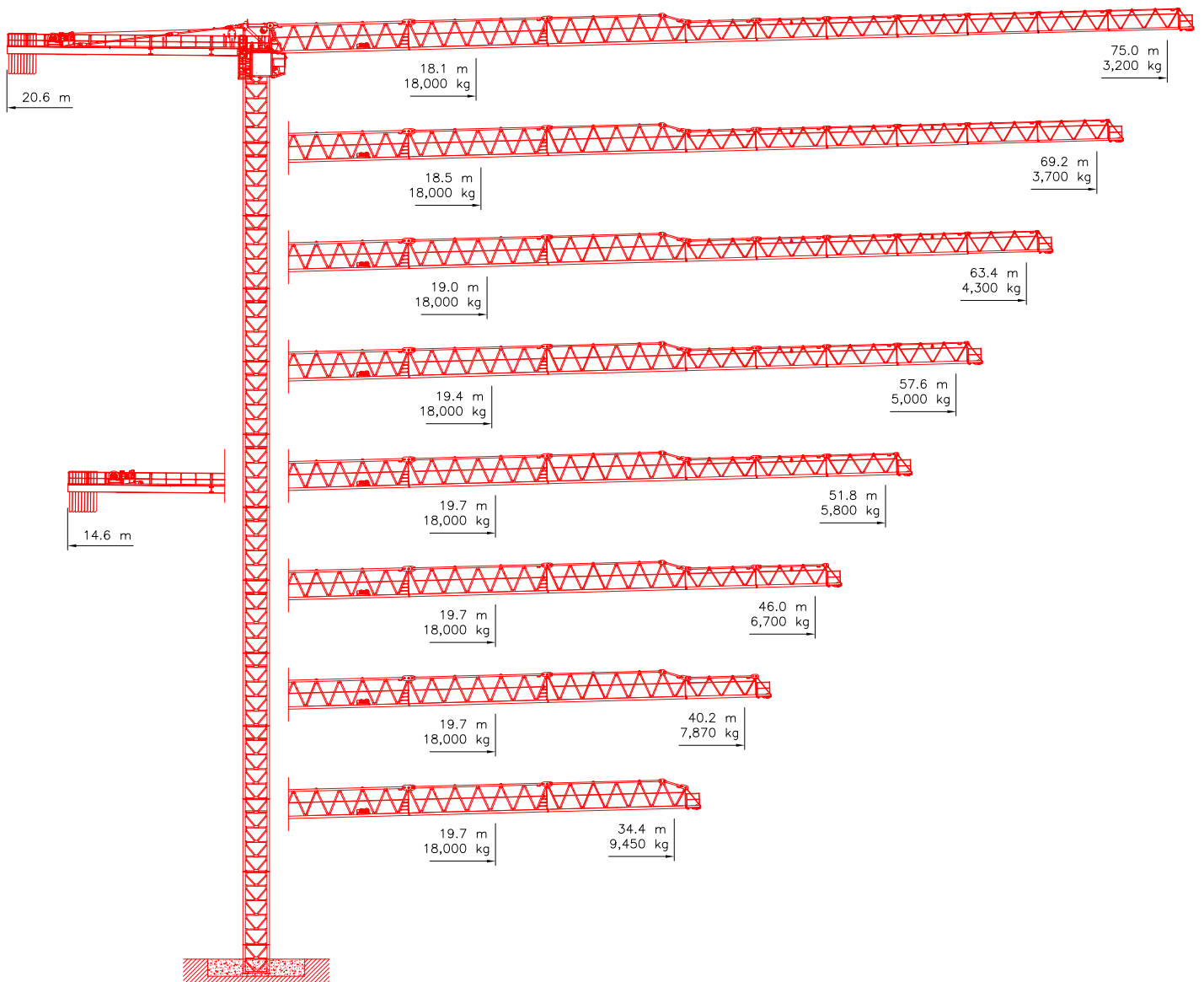




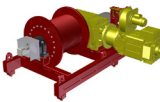

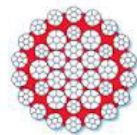

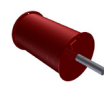
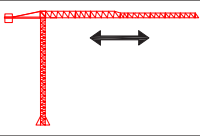


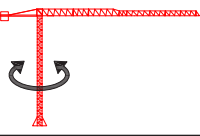


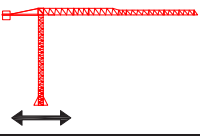
FLAT TOP TOWER CRANE

K330F

18 tonnes Max

JIB CONFIGURATIONS



| | | | | | |
|---|---|-----------------------------------|---|--|------------|
| HOIST WINCH MOTOR 55 kW | 2-PARTS | | 4-PARTS | | |
| |  | |  | | |
|  | Load | Max. Speed | Load | Max. Speed | |
| | 0 - 1.0 t 1.0 - 3.5 t 3.5 - 9.0 t | 128 m/min 72 m/min 32 m/min | 0 - 2.0 t 2.0 - 7.0 t 7.0 - 18.0 t | 64 m/min 36 m/min 16 m/min | |
|  | HOIST DRUM | |  | HOIST WIRE | |
| | CAPACITY 430 m / 6 Layers | | | Diameter | 18 mm |
| | | | Safety Factor | 5 | |
| | | | MBL | 220 kN | |
|  | TROLLEY WINCH | |  | TROLLEY DRUM | |
| | MOTOR 7 kW | | | CAPACITY 75 m / 1 Layer | |
| TROLLEY SPEEDS | | | TROLLEY WIRE | | |
|  | 0 - 18 t | 0 - 70 m/min | Diameter | 9 mm | |
| | | | Safety Factor | 6 | |
| | | | MBL | 65 kN | |
|  | SLEW DRIVE | |  | POWER | |
| | Motor 2 x 7 kW | | | SUPPLY 400 - 480 V, 50/60 Hz | |
| SLEW SPEEDS | | | Consumption | 100 kVA | |
|  | 0 - 18 t | 0 - 0.6 rpm | Main Fuse | 100 A | |
| | | | Recommended Generator Size | 250 kVA | |
|  | UNDERCARRIAGE | |  | SUPPLY CABLE | |
| | Motor 4 x 7 kW | | | Cable Length | Cable Type |
| TRAVEL SPEEDS | | | 0 - 175 m | 4 x 25 mm ² | |
|  | 0 - 18 t | 0 - 25 m/min | 175 - 250 m | 4 x 35 mm ² | |
| | | | | | |
| <p>All motion controls are completely stepless ensuring smooth and jerk-free operation. Creeping speed down to 0.5% of maximum speed.</p> | | | <p>All specifications shown in the tables are for the standard version of K330F. For special requirements regarding load charts or drive speeds, please contact Krøll Cranes A/S.</p> | | |



KRØLL CRANES A/S
Nordkranvej 2
DK-3540 Lyngø
Denmark

Tel: +45 48 18 74 00
Mail: info@krollcranes.dk
Web: www.krollcranes.dk

