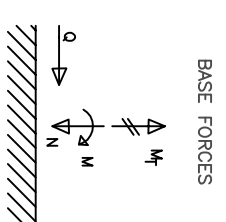
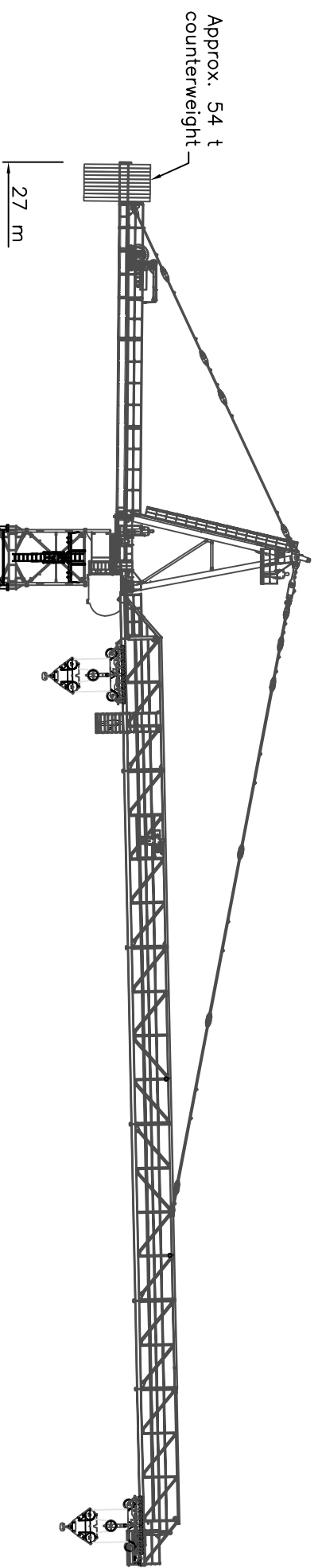
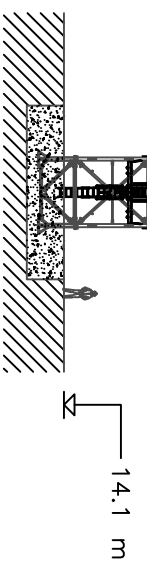
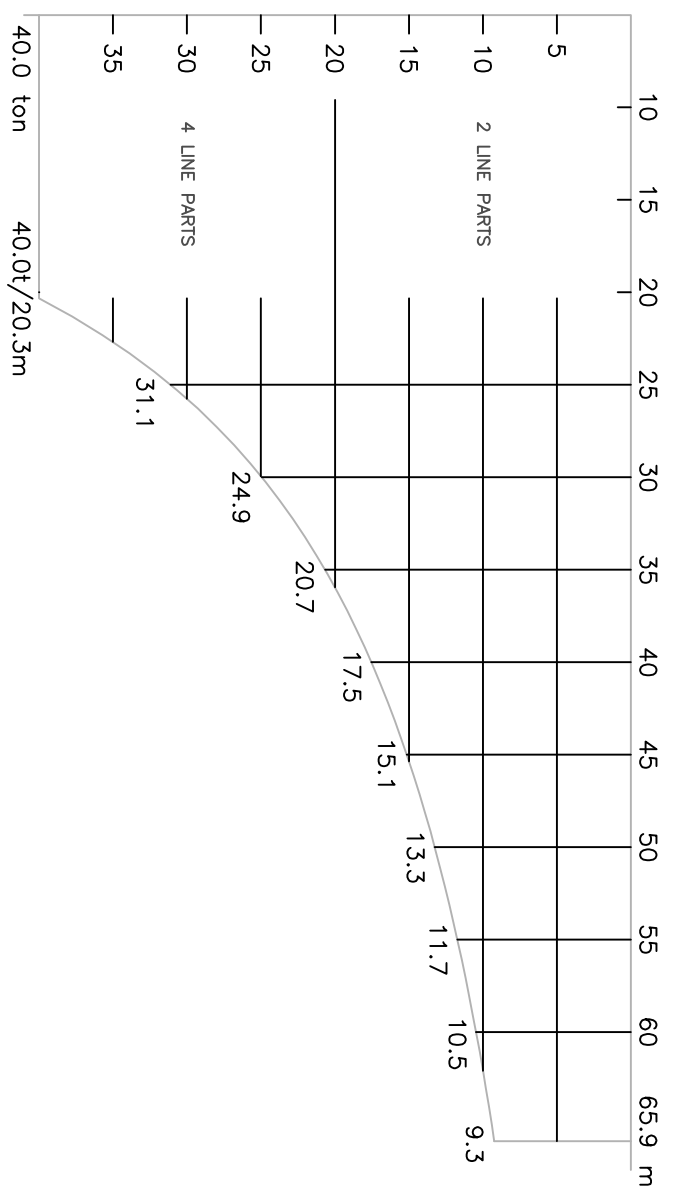


K800 TC2



PHASE 6, HUH = 79 m (elevation: 93.1m, required: 92.6m)

Wind speed	IN SERVICE 20 m/s	OUT OF SERVICE 50 m/s
M (kNm)	11140	12770
N (kN)	2700	2470
Q (kN)	95	320
M _T (kNm)	1000	0
Corner compression (kN)	2870	3120
Corner tension (kN)	1510	1890

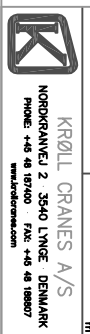


PERFORMANCE

HOIST MOTOR : 85 kW	
2 PARTS	
0-4 t	0-74 m/min
4-8 t	0-44 m/min
8-10 t	0-22 m/min
4 PARTS	
0-8 t	0-37 m/min
8-16 t	0-22 m/min
16-40 t	0-11 m/min
T	0-40 t
T	0-40 t
T	0-40 t
T	0-70 m/min
T	0-40 t
T	0-40 t
T	0-0.6 rpm
T	0-40 t
T	N/A

⚡	3 x 380-440 V 50-60 Hz	CONTROL VOLTAGE 24 VDC - 220 VAC
----------	---------------------------	-------------------------------------

KONST.: 111209 JL	PROJ.	KRANTYPE	STK.	SMAL. TEKN.
TEKN.: 111209 JL				
COOK.: 111209 JL				
ERSTATTER	SKALDE	OVERF. ANBEJL. OVERFLADE-BEHANDLING	MATE:	
ERSTATET AF:	1:200	TOTALVEGT:	ANT. TEKNING:	ANT. STYKL.:
OPRINDELSE:	TRANSPORTTAL:	kg	TIEL	
		m ³		
K800				
Main assembly				
TECH. NR. C1-00.00090801-00				



KRÖLL CRANES A/S
NORBRUNNVEJ 2, 3540 LYNØE, DENMARK
PHONE: +45 46 187400 FAX: +45 46 188007
www.kröllcranes.com