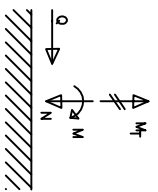
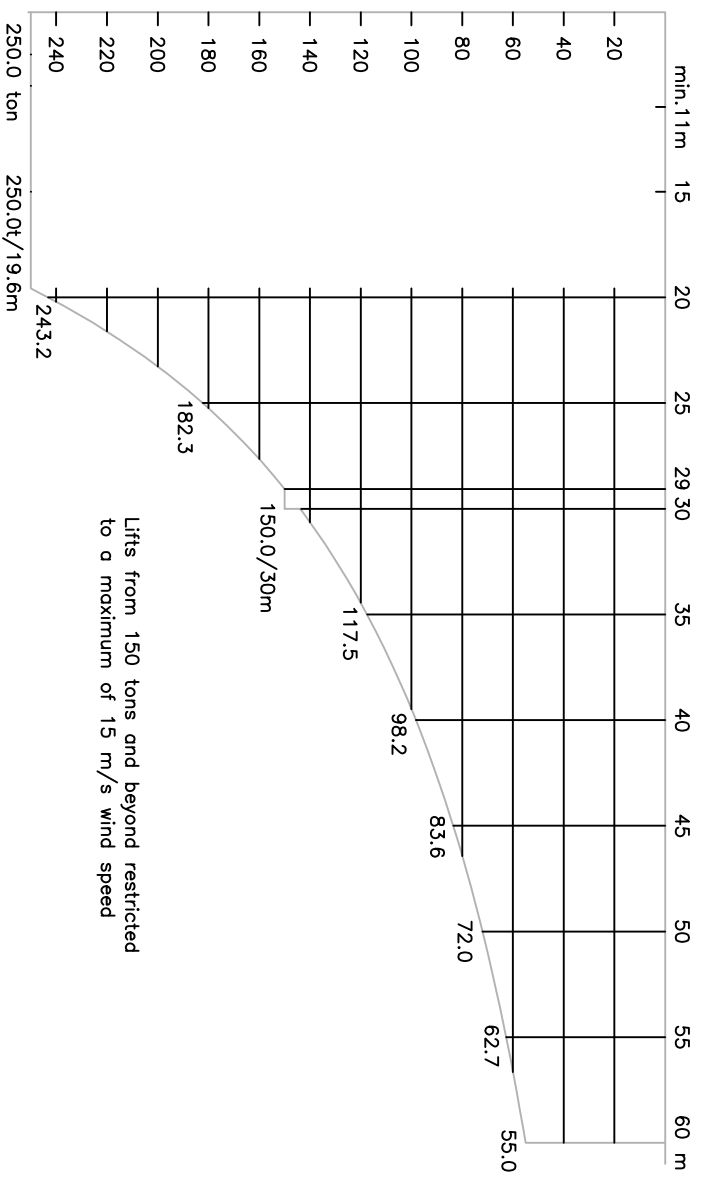


BASE FORCES



38 m height under hook

Wind speed	IN SERVICE		OUT OF SERVICE	
	250 t 15 m/s	tipload 20 m/s	wedthervone 50 m/s	locked/90° 30 m/s
M (kNm)	45300	36720	-12170	34000
N (kN)	8300	6060	5330	5330
Q (kN)	190	140	410	150
M _T (kNm)	2550	2550	0	0
Corner compression (kN)	5580	4280	3300	3880
Corner tension (kN)	1410	1380	770	1360



Lifts from 150 tons and beyond restricted
to a maximum of 15 m/s wind speed

38 m
from top of
fixation structure

PERFORMANCE

HOIST MOTOR :	200 kW
2 parts	0-3 t
3-14 t	0-80 m/min
14-50 t	0-50 m/min
	0-20 m/min
10 parts	0-15 t
15-70 t	0-16 m/min
70-250 t	0-10 m/min
	0-4 m/min
	0-100 t
	0-30 m/min
	100-250 t
	0-15 m/min
	0-250 t
	0-0.4 rpm
	0-250 t
	N/A

3 x 400 V 50 Hz non-grounded IT supply	CONTROL VOLTAGE 24 VDC - 220 VAC
--	-------------------------------------

Design according to F.E.M., 3rd Edition
Classification : A3

Fixation structure

9.2 x 9.2 m

External transformer by Lürssen

Level 0.0 m

-10 m

KONST.: 130301 JL	PROJ.	KRANTYPE	STK.	SMAL.	TECH.
TECH.: 130301 JL					
COOK.: 130301 JL					
BRISTATIERE	SKALDE:	OVERF.	ANBEKAL	OVERFLAIDE	BEHANDLING
	1:175				
BRISTATIERE AF:	TOTALVEGT:	ANT. TECHNIKE:	ANT. STYKKE:		
	kg				
OPRINDELSE:	TRANSPORTTÅL:				
	m ²				
K5000 Initial erection					
TECH. NR. C1-00.00090829-08					



KRÖLL CRANES A/S
NORGRANVEJ 2, 3540 LYNØE, DENMARK
PHONE: +45 46 107400 FAX: +45 46 108007
www.kroellcranes.com

TECH. NR. C1-00.00090829-08