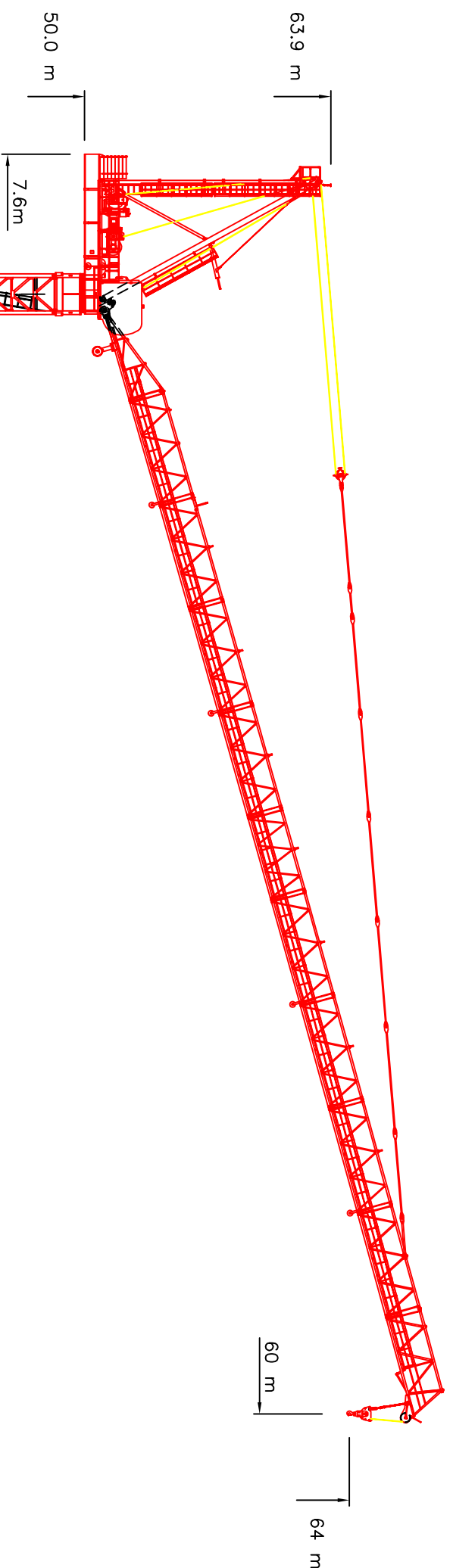


K365L



Boom length	Maximum load at	26,0	27,6	28,0	30,0	33,2	35,0	38,8	40,0	44,4	48,0	50,0	52,0	55,0	60,0 m
60,0 m	12 t	29,2 m	12,00	12,00	11,53	9,92	9,15	7,75	7,37	6,13	5,29	4,87	4,49	3,96	3,20
55,0 m	12 t	29,5 m	12,00	12,00	11,72	10,13	9,36	7,97	7,59	6,36	5,52	5,11	4,72	4,20	
50,0 m	16 t	24,3 m	14,68	13,57	13,31	10,53	9,77	8,38	7,99	6,76	5,92	5,50			
44,4 m	16 t	24,5 m	14,82	13,73	13,47	10,73	9,97	8,60	8,22	7,00					
38,8 m	16 t	25,0 m	15,23	14,13	13,88	12,71	11,14	10,38	9,00						
33,2 m	16 t	25,4 m	15,57	14,48	14,23	13,07	11,50								
27,6 m	16 t	25,9 m	15,91	14,80											

PERFORMANCE

	HOIST MOTOR	: 55 kW
	LUFFING MOTOR	: 45 kW
	1 PART	0-2 t 2-4 t 4-8 t
		0-100 m/min 0-64 m/min 0-36 m/min
	2 PARTS	0-4 t 4-8 t 8-16 t
		0-50 m/min 0-32 m/min 0-18 m/min
		0-16 t
		2:00 min:sec
		0-16 t
		0-0,7 rpm
	3 x 380-440 V 50-60 Hz	CONTROL VOLTAGE 24 VDC - 220 VAC

NO.	TEGNING NR.	TEGNING	SKAL	TEGN.	TEGN.	TEGN.
16	01-01-00041316	K22-2 (2 m)	1	1	2,0 t	
15	02-01-00050336	K22-2 complete (6m)	8	4,2t	33,6 t	
13	48-03651556	Electrical parts complete	1	1		
11	C3-72-00057521	Counterweight, 8500 kg	1	8,5 t		
10	C3-72-00057520	Counterweight, 4500 kg	7	4,5	31,5 t	
9	08-168-52315	Luffing wire, Ø26x160	1	0,3 t		
8	08-168-52315	Hook assembly, 16 t	1	0,4 t		
7	02-06-00044524	Cabin and platform	1	1,9 t		
6	02-03-00057509	Hook assembly, 16 t	1	1,9 t		
5	01-04-00057505	Topower assembly	1	4,6 t		
4	01-04-00057505	Counterjib assembly	1	9,9 t		
3	01-03-00057504	Swinging/matched assembly	1	10,9 t		
2	01-08-00057502	Stay assembly, 60 m	1	1,4 t		
1	01-02-00057501	Boom assembly, 60 m	1	1,4 t		

TEGN. : 111209 J.L. PROJ. : 111209 J.L. KRANTYPE : SKL. SKAL. TEKN. : Længde Type-Kædder SKL. TEKN. : Bemærkninger

TEKN. : 111209 J.L. OVERF. AREAL : 116.000 kg

ENSATTEDE AF : TOYALVERET : 116.000 kg

OPRINDELSE : TRANSPORTMÅL : 116.000 kg

TEKN. NR. : K365L

TEKN. NR. : C1-00.00057500-00

KRÖLL CRANES A/S
 HØRGRANVEJ 2, 3540 LYNØE, DENMARK
 PHONE: +45 46 85100 FAX: +45 46 18807
 www.kröllcranes.com