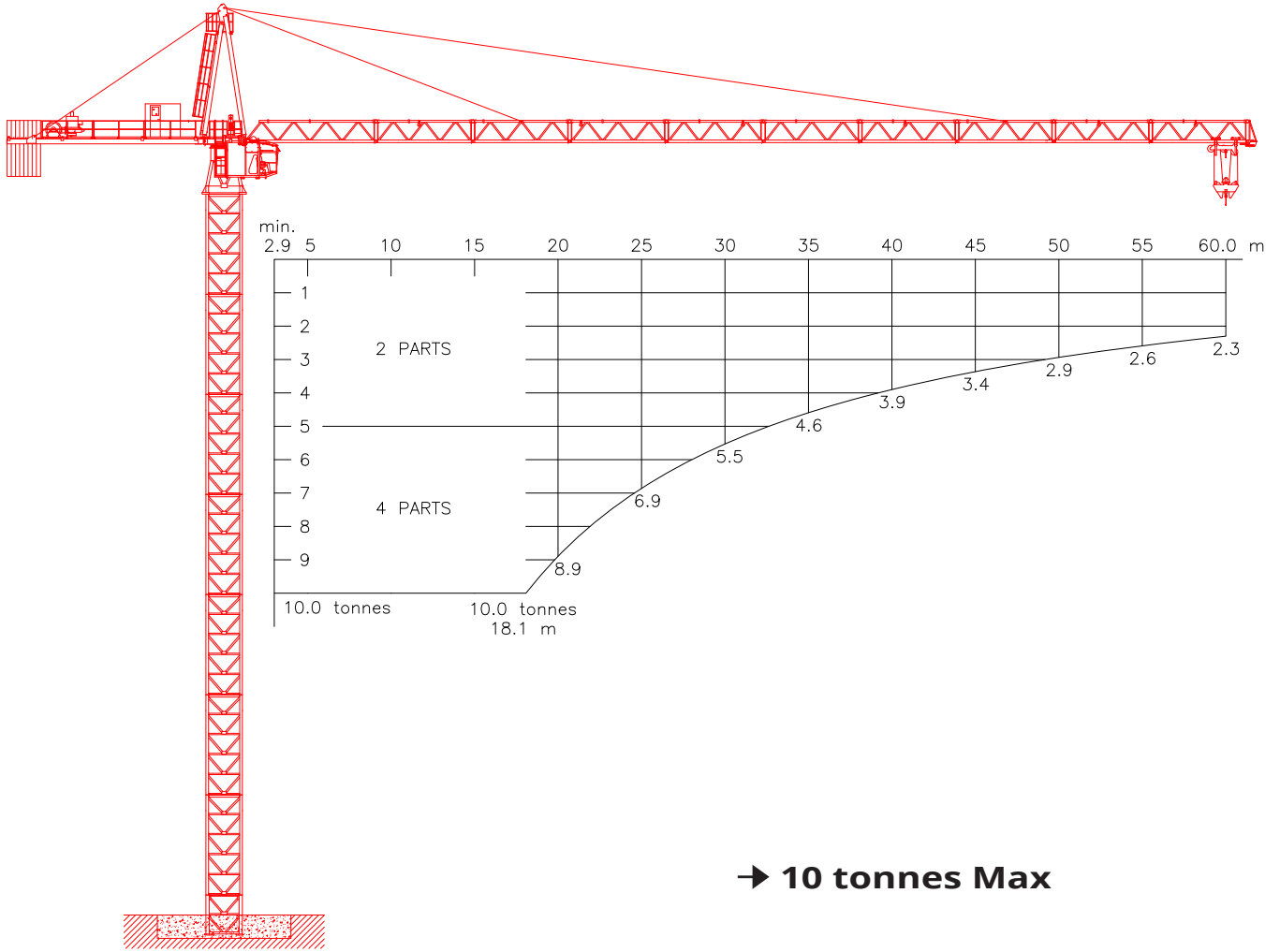




KROLL CRANES



F.E.M 1.001-A3/E3

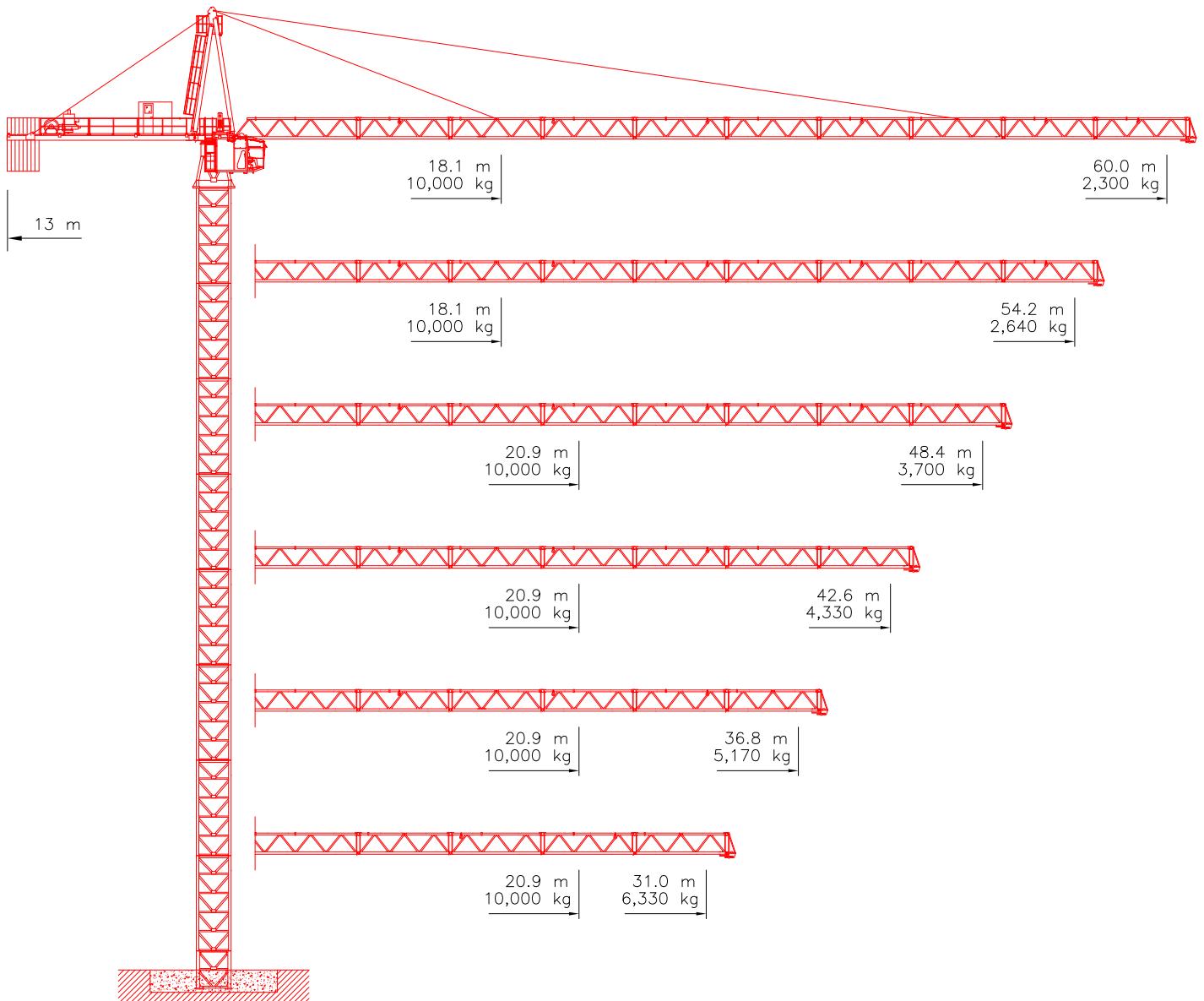


HIGH TOP TOWER CRANE

K180

10 tonnes Max



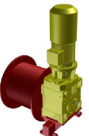

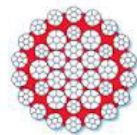


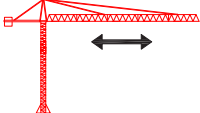


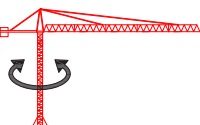


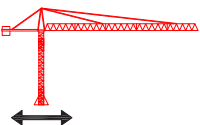
JIB CONFIGURATIONS





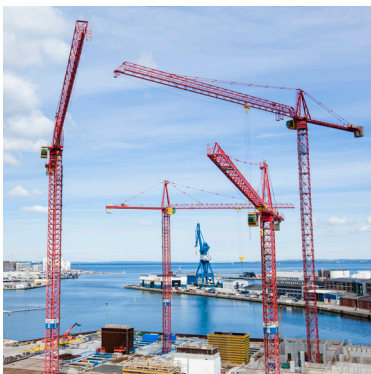
LOAD CHARTS

Radius	Jib Length											
	60.0 m		54.2 m		48.4 m		42.6 m		36.8 m		31.0 m	
	4 parts	2 parts	4 parts	2 parts	4 parts	2 parts	4 parts	2 parts	4 parts	2 parts	4 parts	2 parts
[m]	[kg]	[kg]	[kg]	[kg]	[kg]	[kg]	[kg]	[kg]	[kg]	[kg]	[kg]	[kg]
18.0	10,000	5,000	10,000	5,000	10,000	5,000	10,000	5,000	10,000	5,000	10,000	5,000
19.0	9,440	5,000	9,440	5,000	10,000	5,000	10,000	5,000	10,000	5,000	10,000	5,000
20.0	8,900	5,000	8,900	5,000	10,000	5,000	10,000	5,000	10,000	5,000	10,000	5,000
21.0	8,410	5,000	8,410	5,000	9,930	5,000	9,930	5,000	9,930	5,000	9,930	5,000
22.0	7,960	5,000	7,960	5,000	9,410	5,000	9,410	5,000	9,410	5,000	9,410	5,000
23.0	7,560	5,000	7,560	5,000	8,940	5,000	8,940	5,000	8,940	5,000	8,940	5,000
24.0	7,190	5,000	7,190	5,000	8,520	5,000	8,520	5,000	8,520	5,000	8,520	5,000
25.0	6,860	5,000	6,860	5,000	8,120	5,000	8,120	5,000	8,120	5,000	8,120	5,000
26.0	6,550	5,000	6,550	5,000	7,760	5,000	7,760	5,000	7,760	5,000	7,760	5,000
27.0	6,270	5,000	6,270	5,000	7,430	5,000	7,430	5,000	7,430	5,000	7,430	5,000
28.0	6,000	5,000	6,000	5,000	7,130	5,000	7,130	5,000	7,130	5,000	7,130	5,000
29.0	5,760	5,000	5,760	5,000	6,840	5,000	6,840	5,000	6,840	5,000	6,840	5,000
30.0	5,530	5,000	5,530	5,000	6,580	5,000	6,580	5,000	6,580	5,000	6,580	5,000
31.0	5,320	5,000	5,320	5,000	6,330	5,000	6,330	5,000	6,330	5,000	6,330	5,000
32.0	5,120	5,000	5,120	5,000	6,100	5,000	6,100	5,000	6,100	5,000		
33.0	4,930	4,930	4,930	4,930	5,880	5,000	5,880	5,000	5,880	5,000		
34.0	4,760	4,760	4,760	4,760	5,680	5,000	5,680	5,000	5,680	5,000		
35.0	4,590	4,590	4,590	4,590	5,480	5,000	5,480	5,000	5,480	5,000		
36.0	4,440	4,440	4,440	4,440	5,300	5,000	5,300	5,000	5,300	5,000		
36.8	4,320	4,320	4,320	4,320	5,170	5,000	5,170	5,000	5,170	5,000		
37.0	4,290	4,290	4,290	4,290	5,130	5,000	5,130	5,000				
38.0	4,150	4,150	4,150	4,150	4,970	4,970	4,970	4,970				
39.0	4,020	4,020	4,020	4,020	4,820	4,820	4,820	4,820				
40.0	3,900	3,900	3,900	3,900	4,670	4,670	4,670	4,670				
42.0	3,670	3,670	3,670	3,670	4,410	4,410	4,410	4,410				
42.6	3,600	3,600	3,600	3,600	4,330	4,330	4,330	4,330				
43.0	3,560	3,560	3,560	3,560	4,280	4,280						
44.0	3,460	3,460	3,460	3,460	4,160	4,160						
45.0	3,360	3,360	3,360	3,360	4,050	4,050						
46.0	3,270	3,270	3,270	3,270	3,940	3,940						
47.0	3,180	3,180	3,180	3,180	3,840	3,840						
48.0	3,090	3,090	3,090	3,090	3,740	3,740						
48.4	3,060	3,060	3,060	3,060	3,700	3,700						
49.0	3,010	3,010	3,010	3,010								
50.0	2,940	2,940	2,940	2,940								
51.0	2,860	2,860	2,860	2,860								
52.0	2,790	2,790	2,790	2,790								
53.0	2,720	2,720	2,720	2,720								
54.0	2,650	2,650	2,650	2,650								
54.2	2,640	2,640	2,640	2,640								
55.0	2,590	2,590										
56.0	2,530	2,530										
57.0	2,470	2,470										
58.0	2,410	2,410										
59.0	2,350	2,350										
60.0	2,300	2,300										

HOIST WINCH MOTOR 37 kW	2-PARTS		4-PARTS		
					
	Load	Max. Speed	Load	Max. Speed	
	0 - 1.0 t 1.0 - 2.0 t 2.0 - 5.0 t	100 m/min 76 m/min 38 m/min	0 - 2.0 t 2.0 - 4.0 t 4.0 - 10.0 t	50 m/min 38 m/min 19 m/min	
	HOIST DRUM			HOIST WIRE	
	CAPACITY 350 m / 4 layers			Diameter	15 mm
				Safety Factor	5
				MBL	173 kN
	TROLLEY WINCH			TROLLEY DRUM	
	MOTOR 4 kW			CAPACITY 60 m / 1 Layer	
TROLLEY SPEEDS			TROLLEY WIRE		
	0 - 10 t	0 - 70 m/min	Diameter	10 mm	
			Safety Factor	5	
			MBL	87 kN	
	SLEW DRIVE			POWER	
	Motor 2 x 7 kW			SUPPLY 400 - 480 V, 50/60 Hz	
SLEW SPEEDS			Consumption	50 kVA	
	0 - 10 t	0 - 0.7 rpm	Main Fuse	80 A	
			Recommended Generator Size	125 kVA	
	UNDERCARRIAGE			SUPPLY CABLE	
	Motor 2 x 5.5kW			Cable Length	Cable Type
TRAVEL SPEEDS			0 - 175 m	4 x 16 mm ²	
	0 - 10 t	0 - 20 m/min	175 - 250 m	4 x 25 mm ²	
<p>All motion controls are completely stepless ensuring smooth and jerk-free operation. Creeping speed down to 0.5% of maximum speed.</p>			<p>All specifications shown in the tables are for the standard version of K180. For special requirements regarding load charts or drive speeds, please contact Krøll Cranes A/S.</p>		



KRØLL CRANES



KRØLL CRANES A/S
Nordkranvej 2
DK-3540 Lyngø
Denmark

Tel: +45 48 18 74 00
Mail: info@krollcranes.dk
Web: www.krollcranes.dk

